

21.04.2023



Ashburton District Council

# Recreation Facilities Utilisation Study



# Table of Contents

<b>1</b>	<b>Executive summary .....</b>	<b>1</b>
<b>2</b>	<b>Sector Trends .....</b>	<b>2</b>
2.1	Ashburton District .....	2
2.2	Strategic Document Review .....	7
<b>3</b>	<b>Gap Analysis .....</b>	<b>9</b>
3.1	Site Maps .....	9
3.2	Engagement.....	9
3.2.1	Athletics .....	9
3.2.2	Badminton .....	10
3.2.3	Basketball.....	11
3.2.4	Cricket .....	13
3.2.5	Football and Futsal.....	16
3.2.6	Hockey .....	19
3.2.7	Netball .....	21
3.2.8	Pickleball .....	24
3.2.9	Rugby .....	25
3.2.10	Rugby League.....	29
3.2.11	Softball .....	31
3.2.12	Squash.....	32
3.2.13	Swimming .....	35
3.2.14	Touch Rugby .....	38
3.2.15	Volleyball .....	40
<b>3.3</b>	<b>Facilities .....</b>	<b>41</b>
3.3.1	EA Networks Centre.....	41
3.3.2	EA Fitness Centre .....	44
<b>4</b>	<b>Recommendations .....</b>	<b>46</b>
4.1	Priorities .....	46
4.2	Club Development – Private Land .....	49
4.3	Timeframes & Budget.....	51
	<b>Appendix A – Site Maps .....</b>	<b>56</b>
	<b>Appendix B – Stakeholder List .....</b>	<b>80</b>
	<b>Appendix C – Expected Participation Rates for Ashburton District .....</b>	<b>82</b>

# 1 Executive summary

This report provides the full findings and recommendations of the Recreation Facilities Utilisation Study completed in April 2023 by Xyst, on behalf of Ashburton District Council.

Ashburton District is made up of a population of 33,423 (2018 Census) with a predominantly European population (83.4%). Major changes forecasted between 2018 and 2033 include a 2.4% decrease in the young family population, a 2.3% increase in the young retiree population and a 1.8% increase in the older retiree population. Suggesting that the district will have a more aged population by 2033.

Sports that are popular at a school level within the Ashburton District and showing trends of increasing participation include netball, basketball, volleyball, and squash. Sports that have shown declining participation at a school level include athletics, badminton, rugby, and swimming.

Sports that have a high participation rate in the Ashburton District compared to national averages are Swimming (0.7% higher), Cricket (0.3% higher) and Touch Rugby (0.1% higher). Most popular activities for participation in the Ashburton District include:

1. Walking for sport or leisure (51.8%)
2. Jogging/running (24.3%)
3. Gardening (22.8%)
4. Inactive (22.8%)
5. Playing games (20.4%)

Sport and recreation activities that we assessed through the extent of this project are as follows, any activities that fall outside of this list should be assessed further to determine their utilisation and any associated trends.

Sport and recreation activities analysed		
Athletics	Badminton	Basketball
Cricket	Football	Futsal
Hockey	Netball	Pickleball
Rugby	Rugby League	Softball
Squash	Swimming	Touch Rugby
Volleyball	Gym Sports	

Through engaging with various sport and recreation groups within the Ashburton District we found that the following facilities had high levels of utilisation:

- EA Networks Centre – pool and indoor court space.
- Ashburton Domain – including the hockey turf and sports fields.
- Methven Domain.

Through engaging with various sport and recreation groups within the Ashburton District we found that the following facilities had low levels of utilisation:

- Argyle Park.

Key findings through engagement are as follows:

- There is a disconnect between some clubs and Council staff.
- There is a lack of understanding of ownership of some assets on Council land.
- There is a need for further investigation into additional indoor court space within the district.

- There is a need for further investigation into additional indoor swim provision within the district.
- There is a need for further investigation into hockey turf provision within the district.
- There is a need for further investigation into future development at Argyle Park for a potential sports hub.
- There is a potential oversupply of rugby clubs within the Ashburton township with some clubs struggling for high membership numbers.
- There is a level of conflict at the Ashburton domain between various sports field user groups.

A further list of recommendations has been provided at the rear of this report, with the intention that these could be taken into the 2024-2034 Long Term Plan for budgeting purposes, subject to approval from Council.

## 2 Sector Trends

### 2.1 Ashburton District<sup>1</sup>

Ashburton District is made up of a population of 33,423 (2018 Census). Ashburton District is a predominantly European district with 83.4% of the population affiliating as European, this is around 9.3% above the national average for cities and districts. Forecasts show that this is expected to decrease by 2.3% by 2033. Major increases in other ethnic populations include Māori (3.9% increase) and Pacifica peoples (1.1% increase). A visual representation of the ethnicity split in Ashburton District is shown below in Figure 1.

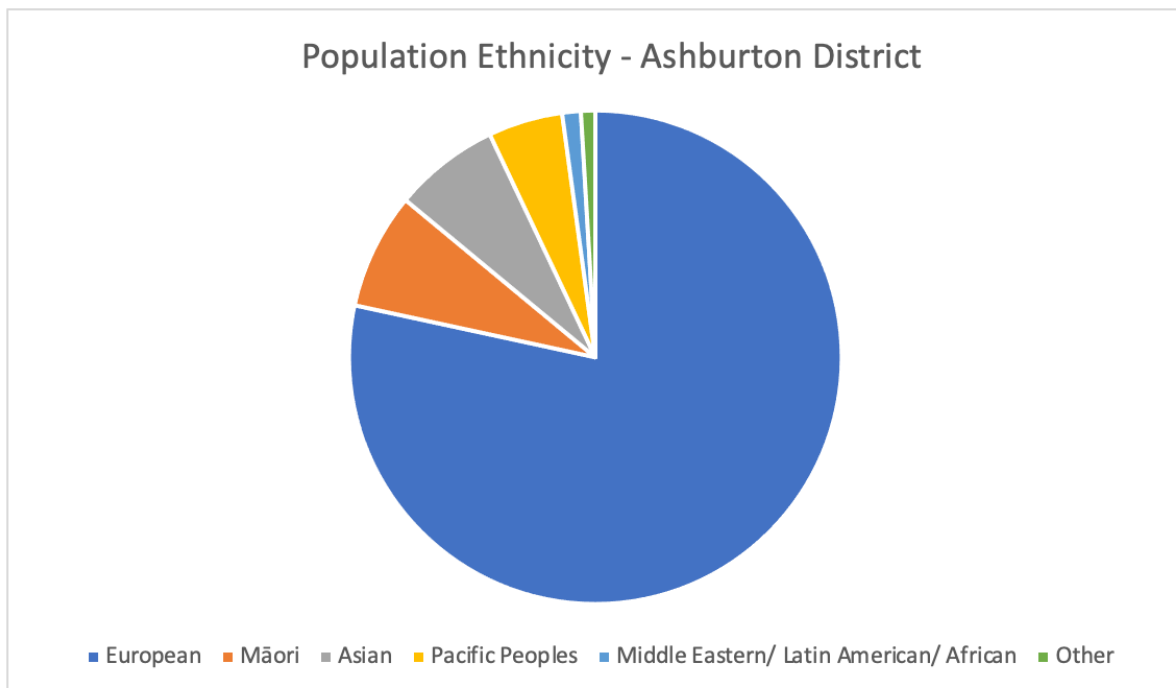


Figure 1: Population ethnicity differentiation - Ashburton District

Ashburton District has a slightly higher population of males (51.1%) compared to females (48.9%) this is projected to stay relatively similar through to 2033 (females 48.7% and males 51.3%).

<sup>1</sup> Data pulled from: Sport New Zealand Insights Tool <https://sportnz.org.nz/resources/insights-tool/>

The life stage of people within the Ashburton district is made up of the majority being older adults (19.3%), young families (17.2%) young retirees (12.3%) and primary (10.7%). This population life stage differentiation is shown below in Figure 2.

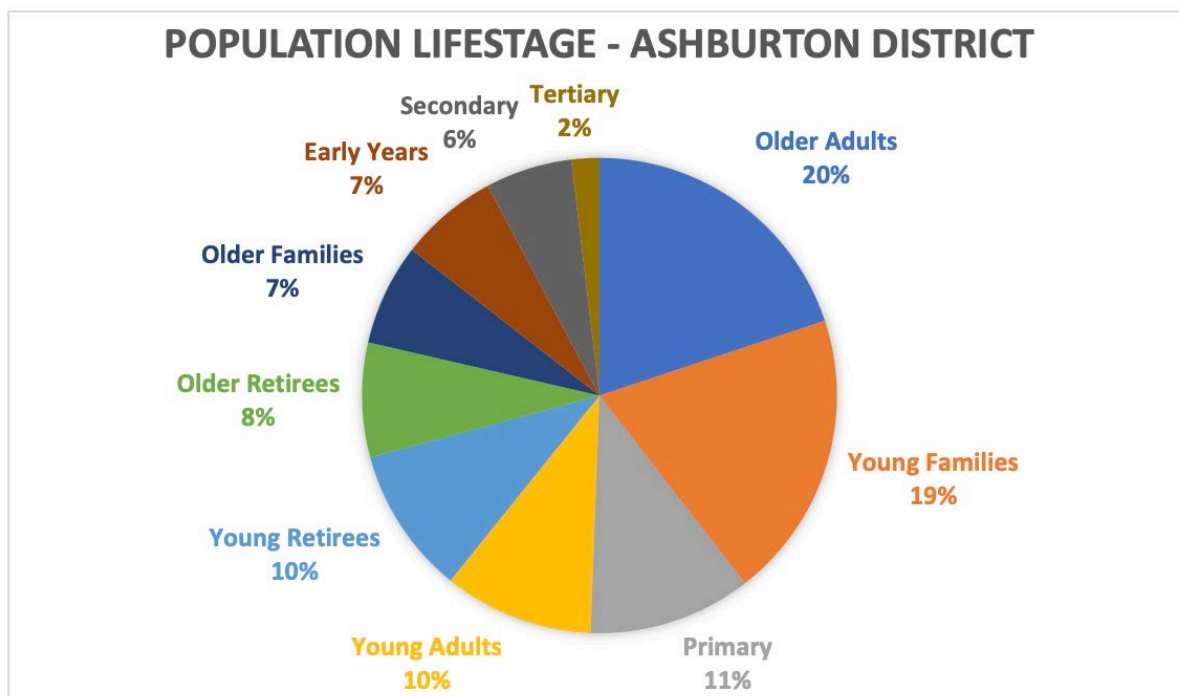


Figure 2: Population life stage differentiation - Ashburton District

Major changes forecasted between 2018 and 2033 include a 2.4% decrease in the young family population, a 2.3% increase in the young retiree population and a 1.8% increase in the older retiree population. Suggesting that the district will have a more aged population by 2033.

Most popular activities for participation in the Ashburton District include:

6. Walking for sport or leisure (51.8%)
7. Jogging/running (24.3%)
8. Gardening (22.8%)
9. Inactive (22.8%)
10. Playing games (20.4%)

If we consider activities that have organised sport aspects, the most popular sports in the Ashburton District include<sup>2</sup>:

1. Jogging/running 24.3% (sits at #2 in overall activity participation)
2. Cycling/biking 15.7% (sits at #7 in overall activity participation)
3. Swimming 14.2% (sits at #8 in overall activity participation)
4. Mountain biking 7.2% (sits at #11 in overall activity participation)
5. Dance 7.1% (sits at #12 in overall activity participation)

Participation trends have been outlined for sport and recreation activities that are relevant to this study.

<sup>2</sup> Overall activity participation data for the Ashburton District shown in Appendix C

below shows the difference between expected national activity participation rates and Ashburton District expected activity participation for 2023. Activities that predict higher participation in Ashburton district include Swimming (0.7% higher), Cricket (0.3% higher) and Touch Rugby (0.1% higher). Activities that predict lower participation in Ashburton district include Athletics (0.4% lower), Rugby league (0.4% lower) and Badminton (0.3% lower).

Table 1: Difference between Ashburton District expected participation rates and National participation rates 2023.

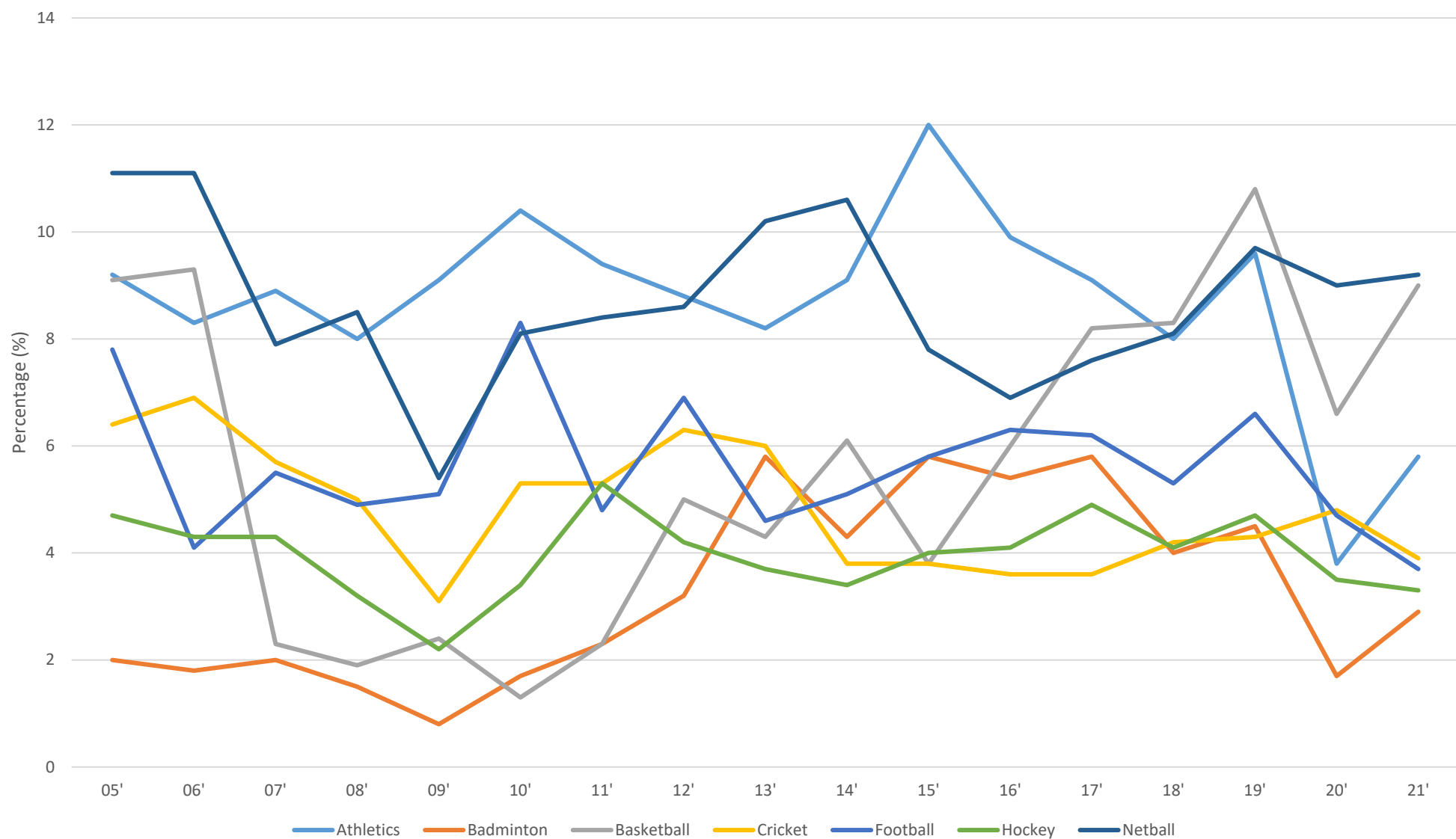
Activity	Ashburton District	National	Participation difference
Athletics	1.3%	1.8%	-0.4%
Badminton	1.3%	1.6%	-0.3%
Basketball	3.2%	3.3%	-0.2%
Cricket	2.0%	1.7%	0.3%
Football	1.8%	1.8%	-0.1%
Futsal	N/A	N/A	N/A
Hockey	1.6%	1.6%	0.0%
Netball	3.0%	3.1%	0.0%
Pickleball	N/A	N/A	N/A
Rugby	2.0%	2.1%	-0.1%
Rugby League	0.3%	0.7%	-0.4%
Softball	0.4%	0.5%	0.0%
Squash	0.9%	0.9%	0.0%
Swimming	14.2%	13.5%	0.7%
Touch Rugby	2.7%	2.5%	0.1%
Volleyball	1.1%	1.0%	0.0%

The two graphs below outline school sport participation trends within the Ashburton District from 2005 to 2021 for sports that are relevant to this study. Sports that saw the largest increase in participation in school sport were squash (3.6% increase) followed closely by Volleyball (2.6% increase). Sports that saw the largest decrease in participation included Touch Rugby (3.4% decrease) and Cricket (3.0% decrease).

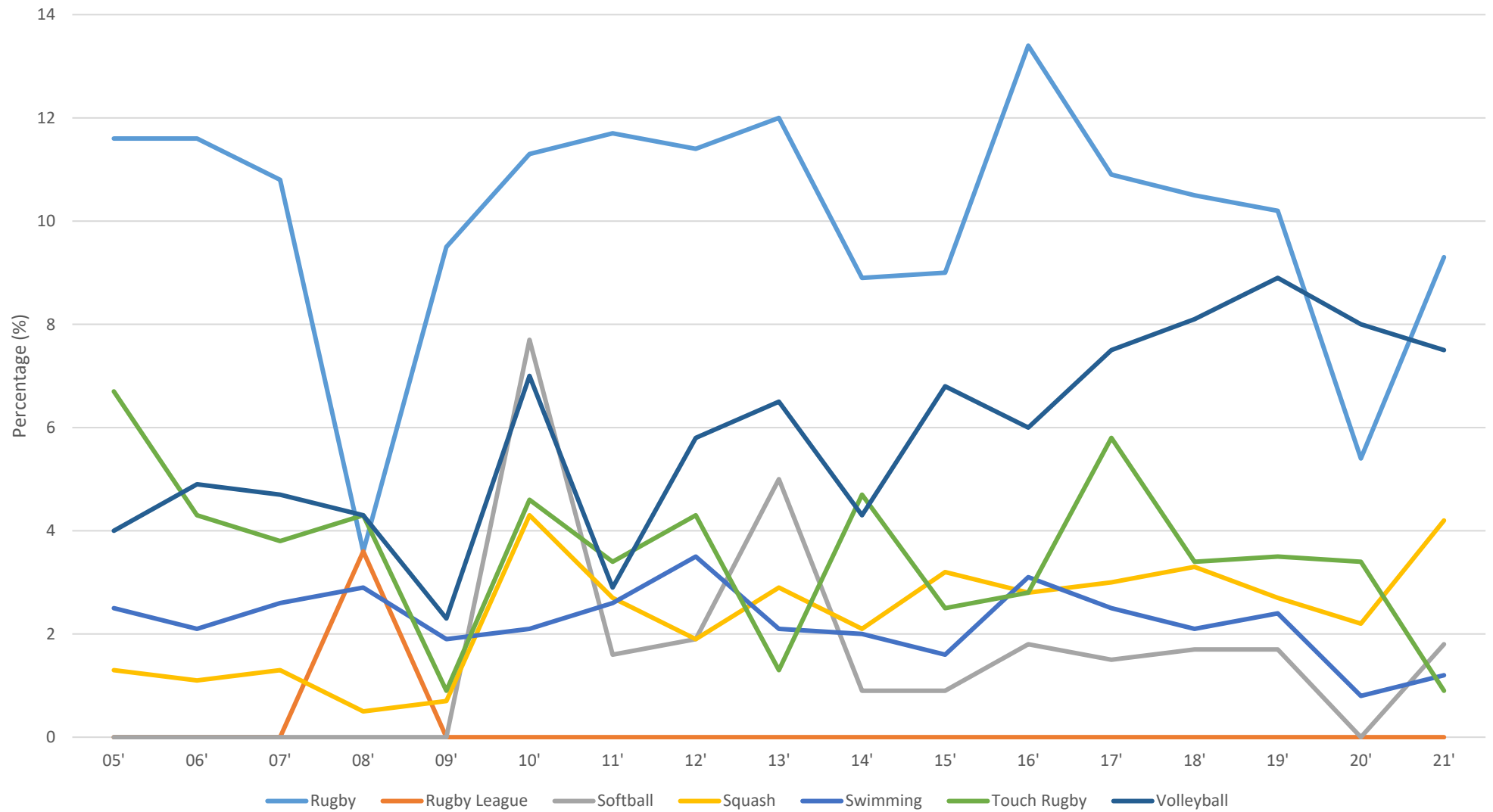
Although Basketball may show a decrease between 2005 and 2021 in participation, the sport has been steadily increasing since 2008 after it had a large decline in participation between 2006 and 2008 (-7.4%).

The first and only year that Rugby League showed school participation in the Ashburton District was 2008 with 3.6% participation, it is unknown what this was caused by.

Ashburton District School Sport Activity Participation (Sports A-N)



Ashburton District School Sport Activity Participation (Sports M-Z)





Historical evidence is helpful to see where the sport has developed over time, most recent participation trends are helpful to predict projections for sport participation over the next few years. Table 2 below shows school sport participation over the 4 years between 2018 and 2021 and the percentage change the sport has had over this time.

Sports which were showing a decrease since 2006 had shown increased participation over the most recent four years. These included Netball (1.1%) and Basketball (0.7%). Softball which saw a large increase over time had only actually seen a 0.1% increase over this period.

Other sports which were showing an increase in participation since 2006 had shown a declining participation trend over the most recent four years. This included Volleyball (-0.6%) and Badminton (-1.1%).

Table 2: Ashburton District School Sport Participation 2018-2021

Activity	2018	2019	2020	2021	Change (18-21)
Athletics	8.0%	9.6%	3.8%	5.8%	-2.2%
Badminton	4.0%	4.5%	1.7%	2.9%	-1.1%
Basketball	8.3%	10.8%	6.6%	9.0%	0.7%
Cricket	4.2%	4.3%	4.8%	3.9%	-0.3%
Football	5.3%	6.6%	4.7%	3.7%	-1.6%
Futsal	N/A	N/A	N/A	N/A	N/A
Hockey	4.1%	4.7%	3.5%	3.3%	-0.8%
Netball	8.1%	9.7%	9.0%	9.2%	1.1%
Pickleball	N/A	N/A	N/A	N/A	N/A
Rugby	10.5%	10.2%	5.4%	9.3%	-1.2%
Rugby League	0%	0%	0%	0%	0%
Softball	1.7%	1.7%	0.0%	1.8%	0.1%
Squash	3.3%	2.7%	2.2%	4.2%	0.9%
Swimming	2.1%	2.4%	0.8%	1.2%	-0.9%
Touch Rugby	3.4%	3.5%	3.4%	0.9%	-2.5%
Volleyball	8.1%	8.9%	8.0%	7.5%	-0.6%

## 2.2 Strategic Document Review

Table 3 below outlines the documents covered in the strategic document review. Other pieces of work including booking data have also been reviewed to provide trends and utilisation outlined in this report.

Table 3: Strategic document review

Document	Notes
Play, Active Recreation and Sport Strategy (2023)	Outlined the need for exploration into EA Networks centre provision. Noted need to explore feasibility into beach volleyball and handball facilities, however these sports were not included within the scope of this study.
Canterbury Spaces and Places Plan (2018)	EA Networks centre is noted as a facility where sports are played but not given further detail into use.

Ashburton Domain Development Plan (2020)	Outlines future development at the domain. Not all user groups correctly captured e.g., field layout, when considering future development.
Tinwald Domain Development Plan (2010)	Outlined the extensive relocation of sports groups on site, however these actions are outdated for the current network. 2018 review noted that only the Plains Village development was taken forward.
Reserve Management Plans	Reviewed reserve management plans for: Hinds, Ashburton Domain, Mayfield, Methven, Mount Somers, Rakaia and Tinwald.

## 3 Gap Analysis

### 3.1 Site Maps

Maps have been pulled together to provide spatial awareness of on-site activities for facilities relevant to this study and can be found in Appendix A. There are some instances where there are more assets onsite, however only assets relevant to this study have been shown. For example, lawn sports such as bowling, and croquet have not been shown on maps, it is noted that they are based at locations relevant to this study such as Allenton All Sports Club and Methven Domain.

Further sport and recreation activities which fall outside of this study would need to be investigated in further studies to determine the utilisation of their facilities. An asset list and high-level assessment was undertaken in response to the requirements of this project for some facilities. Comments on facilities condition below are based on that assessment and include survey feedback from clubs where an in-person assessment was not part of the scope of this project.

### 3.2 Engagement

Engagement was completed for this project between December 2022 and February 2023. A full list of stakeholders and the level of engagement can be found in Appendix B.

#### 3.2.1 ATHLETICS

	Number
Total number of groups contacted	1
Total number of groups engaged with through user group survey	0
Total number of groups engaged with through in-person meetings	0

##### 3.2.1.1 TRENDS

Athletics in the Ashburton District has seen relatively stable participation at a school level since 2005, with participation levels typically shown between 8 – 10%. Between 2019 (9.6%) and 2020 (3.8%) there was a large decline in participation (5.8%) with participation at an all-time low. Participation was at an all-time high in 2015 with participation levels reaching 12%. Participation has been on the rise since the decline in 2020.

Participation in athletics for adults in the Ashburton District sits 0.4% below the national average of 1.8%. Trends shown at a regional level (Canterbury) for athletics show that between 2020 and 2011 there has been an 11% decrease in interest in the sport along with a drop in attendance at the sport (-2%) and a drop in participation (-4%). Likelihood to participate within the next month showed no change between 2011 and 2020.

There is one athletics club within the Ashburton District, Ashburton Athletics club.

##### 3.2.1.2 FACILITY CAPACITY

There is currently one facility for athletics located within the Ashburton District that is not on school grounds. This facility is located at:

- Ashburton Domain

Table 4: Athletics facility capacity and quality

Facility	Facilities	Quality of facilities
Ashburton Domain	Grass running track, 2 rubber long jump pits, 1 rubber high jump area, athletics pavilion	Visual inspection of grass running track concludes it is in good condition. Black lines are put in annually to show the track. Long jump pits and high jump area are in good condition. Pavilion from the outside looks to be slightly weathered and could use some repairs.

### 3.2.1.3 GAPS

Unfortunately, we were unable to make contact with the Ashburton Athletics Club and therefore are unable to pull gaps into this report. Further investigation would need to be made to determine utilisation of athletics facilities within the district.

## 3.2.2 BADMINTON

	Number
Total number of groups contacted	1
Total number of groups engaged with through user group survey	1
Total number of groups engaged with through in-person meetings	1

### 3.2.2.1 TRENDS

Badminton in the Ashburton District has seen a steady rise and decline at a school level between 2009 and 2021 in the Ashburton district. With participation rising from a record low in 2009 of 0.8% to a record high of 5.8% in 2013, 2015 and 2017. Participation has been steadily declining in Ashburton since 2017 pre covid-19.

Participation in Badminton for adults in the Ashburton District sits 0.3% below the national average of 1.6%. Trends shown at a regional level (Canterbury) for badminton does not show trends between 2020 and 2011 however it does show that in 2020 8% recorded an interest in the sport (2.1% below the national average), 3% recorded participating in the activity in the last year, 2% said they would be likely to participate in the next 6 months and 1% attended a sport event.

There are approximately 60 – 70 members as well as casual players participating in badminton within the Ashburton district according to mid Canterbury Badminton. School aged children play in school competitions either at EA Networks centre or within school halls. Mid Canterbury Badminton run two competitions, one for intermediate age and up on a Tuesday evening and one for open ages on a Thursday morning which generally attracts a more social and older generation.

### 3.2.2.2 FACILITY CAPACITY

There is currently 1 facility for badminton located within the Ashburton District that is not on school grounds, this facility is located at:

- EA Networks centre (12 courts)

The club participates in badminton two nights per week year-round; on a Tuesday 7-8pm and a Thursday 9:30-11:30am. This detail is shown on the EA Networks Centre booking overview in Section 3.3.1.

Table 5: Badminton facility capacity and quality

Facility	Courts	Quality of facilities
EA Networks Centre	12	Great facility and in good condition however have noted that the nets can be difficult to erect and are at times not straight.

### 3.2.2.3 COMMENTS THROUGH ENGAGEMENT

Through engaging with mid Canterbury Badminton, we heard the following information:

- There are often difficulties with putting up the nets as tension of the nets is not adequate and this can at times be a health and safety issue to players.
- Numbers have been impacted due to Covid-19 restrictions for international school students, however this is expected to not be an issue this year and membership numbers are expected to increase.
- At this stage the club is happy with the bookings at the EA Networks Centre and do not want or need more space.
- Sometimes the courts at EA Networks Centre are dirty which effects the playing surface.
- The earlier pool closure has impacted the Badminton club as the stadium can feel 'dead' at night and impacts the sociability of the club in the evenings.
- There should be a way for clubs to make surplus courts available for other groups to use at short notice. This currently isn't possible and means that courts sit unused if groups haven't been able to fill their booking or give it away to another group.
- It would be good to have a database for EA Network user groups so that groups can communicate with each other easier.

### 3.2.2.4 GAPS

Through engaging with Mid Canterbury Badminton, it is clear the club does not want or need additional space in near the future. This is also supported by participation trends which shows a steady decline overall since 2017. The organisation also has no plans to further include other programs as they are content with current resources.

With the opening of the New Zealand border and international students expected to come back into the country this was highlighted that participation may increase. It is not anticipated that this increase would be over and above previous participation levels.

### 3.2.3 BASKETBALL

	Number
Total number of groups contacted	1
Total number of groups engaged with through user group survey	1
Total number of groups engaged with through in-person meetings	1

Basketball in the Ashburton District has seen a relatively steady increase in participation at a school level since 2008. This occurred after a rapid 7.3% drop in participation between 2006 (9.3%) and 2007 (2.3%). Participation then peaked in 2019 at 10.8% and saw a drop in participation between 2019 and 2020, however participation has since continued to increase. Overall, the sport has seen a 7.1% rise in participation since its low in 2008 and latest participation results in 2021.

Participation in basketball for adults in the Ashburton District sits 0.2% below the national average of 3.3%. Trends shown at a regional level (Canterbury) for basketball show that between 2020 and 2011 there has been an 3% decrease in interest in the sport along with a drop in participation in the last year (1%). Likelihood to participate within the next 6 months showed a 2% increase as well as attendance at an event (3%).

There are approximately 1000 members as well as casual players participating in basketball within the Ashburton district according to mid Canterbury Basketball. These numbers include 70 primary school teams (yr3-6), 25 intermediate teams (yr7-8) 10 high school teams (yr9-13), 15 senior adult teams and 2 Mid-Canterbury representative teams.

### 3.2.3.1 FACILITY CAPACITY

There are currently 2 facilities for basketball located within the Ashburton District excluding school facilities. These facilities are located at:

- EA Networks centre
- Oxford Street Stadium

The Oxford Street Stadium is owned and operated by mid-Canterbury Basketball and the organisation also books space at the EA Networks centre through Council.

Table 6: Basketball facility capacity and quality

Facility	Courts	Quality of facilities
EA Networks Centre	4	Great facility and in good condition however have noted there is a leak in the roof needs to be fixed. Every other facility in NZ has black lines for basketball but at EA there are red lines for basketball which can be confusing for travelling teams.
Oxford Street Stadium	1	Facility just turned 30 and is facing general maintenance issues. There is no heating, referred to as 'the fridge' by the community and therefore the changing rooms are underutilised. If the main wall was shifted the site could fit an additional court however this would require significant investment. Facility can seat around 400-500 spectators. Facility has been recently reinsured.

There are also a range of outdoor facilities across Ashburton district such as the outdoor courts at EA Networks centre, however these are utilised for informal recreation and competition play/ training is not held on these courts.

The organisation provides basketball year-round Monday – Thursday with representative basketball being played on a Saturday during representative season. The below detail shows booking details however EA Networks Centre bookings are shown in more detail in Section 3.3.1.

Table 7: Basketball facility utilisation

Facility	Monday	Tuesday	Wednesday	Thursday	Friday	Saturday	Sunday
Oxford Street Stadium	3-7pm	3-7pm	3-7pm				
EA Networks Centre	3-7pm			3-7pm			

### 3.2.3.2 COMMENTS THROUGH ENGAGEMENT

Through engaging with mid Canterbury Basketball, we heard the following information:

- They are currently facing difficulties with getting space at EA Networks centre as netball seems to have a monopoly on the site, which creates difficulty for other groups booking the space.
- The organisation forecasts that they will need space at EA on a Wednesday evening however this is currently being used by netball.
- The organisation is limited to the type of tournaments that they can hold. If the EA facility was expanded to include a further 2 courts, this would provide opportunity to host bigger tournaments such as nationals and relieve stress on where to go as the sport continues to grow.
- The Ashburton College development has not included a redevelopment of the indoor basketball court. This is frustrating as the organisation would otherwise be able to utilise it as another game location however the facility is currently in desperate need of repair and the court is not to regulation size (too small).
- More outdoor basketball courts around Ashburton District installed by Council would be great for the community and provide free recreation opportunities.
- The cost of hiring the EA courts keeps increasing which is a barrier to participation for some. Fees will continue to be passed on to users which may prevent some from being able to afford subs in the future.
- If future development was to happen at EA, the organisation would not like to see these costs being passed on to user groups as it is already expensive.
- Children (7yr old's) are currently having to play until as late as 7pm as there is no earlier availability to utilise the courts.

### 3.2.3.3 GAPS

It is evident that the sport is facing an increase in participation and already assessing how they will fit in additional games and trainings in their current court space allocation. Children are currently playing at unfavourable times and extra indoor court space would be well utilised by the organisation in the immediate future for more games and larger tournaments.

It is unlikely that the organisation could afford to complete an extension at the Oxford Street Stadium within the short term and the organisation would support an extension of EA networks Centre to include more indoor courts.

### 3.2.4 CRICKET

	Number
Total number of groups contacted	1
Total number of groups engaged with through user group survey	0
Total number of groups engaged with through in-person meetings	1

Cricket in the Ashburton District has seen fluctuant participation at a school level between 2005 and 2021. Participation was at an all-time high in 2006 (6.9%) and an all-time low in 2009 (3.1%). Overall, the sport has recorded a small increase since this all-time low, with participation recorded for 2021 at 3.9% (0.8% increase).

Participation in cricket for adults in the Ashburton District sits 0.3% above the national average of 1.7%, one of the few sports in Ashburton District that is tracking above national participation trends. Trends shown at a regional level (Canterbury) for indoor/outdoor cricket show that between 2020 and

2011 there has been no change in interest in sport or likelihood to participate within the next 6 months. Participation over the last year saw a 2% decreased and attendance at a sport event saw a 2% increase.

There are approximately 481 players and 100 social members participating in cricket within the Ashburton District according to Mid Canterbury Cricket. These numbers include 24 primary teams, 4 secondary school teams, 8 adult teams and 10 social teams. From these participants 9 representative teams are selected that represent Mid Canterbury in the Hawk Cup.

### 3.2.4.1 FACILITY CAPACITY

There are currently five facilities utilised for cricket purposes located within the Ashburton District excluding school facilities. These facilities are located at:

- Allenton Rugby Football Club
- Ashburton Domain (indoor and outdoor)
- Coldstream Oval
- Lauriston Oval
- Methven Domain

Table 8: Cricket facility capacity and quality

Facility	Artificial Pitch	Grass Pitch	Nets	Pavilion	Quality of facilities
Allenton Rugby Football Club	0	0	2 outdoor	0	In a state of disrepair and need maintenance to be able to use these for training.
Ashburton Domain	3	6	4 outdoor	2 (one owned by technical cricket, the one utilised by MCC is owned by Council)	Pitches are well maintained however artificial pitches may need to move with the proposed new road into the domain. Outdoor nets are brand new and well maintained.
Ashburton Domain Indoor Nets	0	0	2 indoor	1	Indoor nets facility is dilapidated and needs some repairs.
Coldstream Oval	0	1	0	0	Utilised when additional playing surfaces are required. No supplementary facilities are on site (i.e., toilets, clubrooms etc.). Least favourable grounds to play on.
Lauriston oval	0	1	1 outdoor	1 (owned by Lauriston cricket)	Utilised often throughout the year and well maintained by Lauriston cricket club who also own the pavilion and nets on site.
Methven Domain	1	0	2 outdoor	1 (owned in partnership with Methven Rugby)	Facilities owned in partnership with the rugby club overseen by a trust. Facilities are well maintained with extensions planned in the future for the changing facilities. Clubrooms



					well maintained and cricket has sole use over the summer months.
--	--	--	--	--	--

Cricket in the Ashburton District is participated in during the summer months every night of the week. The club utilises both artificial and grass pitches to play on and utilise cricket nets to train in. Facility utilisation is dependent on how many teams are playing per week (if they are playing away or have a bye etc.). The table below depicts the maximum utilisation of the facilities. The indoor nets at Ashburton Domain run on a roster with clubs and during periods where there isn't a club training the facility is open for bookings from the public between 8am – 9pm year-round Monday – Sunday.

In addition to these bookings, Mid-Canterbury Cricket usually hosts one big tournament per year. A typical weekend has about 20 games being played across the district.

The Allenton Rugby Club do not currently have a useable oval and their training nets require repairing. Consequently, the Allenton nets are not shown as being utilised in Table 9 below.

Table 9: Cricket facility utilisation

Facility	Monday	Tuesday	Wednesday	Thursday	Friday	Saturday	Sunday
Allenton Rugby Football Club							
Ashburton Domain	6-8:30pm	6-8:30pm	6-8:30pm		4-5:30pm	9:30-5pm	10:30-5pm
Ashburton Domain Nets			3:30pm – 5:30pm	3:30pm – 8:30pm			
Coldstream Oval			6-8:30pm				10:30-5pm
Lauriston oval			6-8:30pm			9:30-5pm	10:30-5pm
Methven Domain			6-8:30pm			9:30-5pm	10:30-5pm

### 3.2.4.2 COMMENTS THROUGH ENGAGEMENT

Through engaging with Mid Canterbury Cricket, we heard the following information:

- Currently a lack of clarification around who owns facilities within the domain.
- Domain has the potential to be one of the best facilities in Canterbury, we often get comments on it and the shade from the big trees is a bonus for players.
- We have had issues in the past about how short the grass gets cut in the Domain.
- The oval is a big problem for the club due to the little stream in the outfield. Balls often get hit into the water and once they are waterlogged, they are unable to be used again. Would be good to have a solution from Council.
- Conflict at times with football as they have used Roundup to mark the lines for their fields which causes an uneven playing field for cricket in the summer months.
- Athletics have started to mark their track lines in black paint which has been great for cricket as there is no confusion for players.
- Has been conversation with Allenton Rugby Club about making more cricket ovals on their grounds and repairing the cricket nets to create more areas for utilisation.

- Suggestion for a central information hub for all sports to know who to talk to/ contact from other sports.
- Suggestion for a calendar for all sports to outline when their major tournaments are so that other sports are aware of this in the future.

### 3.2.4.3 GAPS

Mid Canterbury Cricket noted through engagement that they are using their current facilities at maximum capacity. There is currently conflict between football in the winter and cricket in the summer at the domain with the positioning of wicket pitches occurring without consultation with football, resulting in conflicting fields. With both sports continuing to grow, this may create future conflict as both sports are competing for space at the domain. A compounding factor is the proposed development at the domain which includes a new entrance that may displace 2 of the artificial cricket wickets.

The organisation has outlined that they have entered early conversations with rugby, specifically Allenton Rugby Club about utilising their grounds in the summer and making the site dual use year-round. This may be a favourable option if the impacted cricket wickets at the domain cannot be replaced in a position that benefits both football and cricket. It would be in council's best interest to facilitate these conversations where possible.

## 3.2.5 FOOTBALL AND FUTSAL

	Number
Total number of groups contacted	3
Total number of groups engaged with through survey	2
Total number of groups engaged with through in-person meetings	2

### 3.2.5.1 TRENDS

Football (outdoor) in Ashburton District schools has seen fluctuant participation over the past 19 years. Between 2013 and 2019 participation was on the rise (2% increase) since 2019 the sport has seen a steady decline (2.9% decrease).

Futsal in Ashburton District schools saw peak participation (1.5%) in 2014. 2013 and 2015 also recorded participation however participation outside of this saw 0% participation recorded, most recently between 2016 and 2021 0% participation has been recorded.

Participation in Football for adults in the Ashburton District sits slightly below (-0.1%) the national average of 1.8%. Specific futsal trends were not outlined for adults' participation. Trends shown at a regional level (Canterbury) for football/soccer (indoor/outdoor) show that interest in the sport has dropped by 3% and participation in the last year has dropped by 2%. Likelihood to participate in the next 6 months and attendance at a sport event have both increased by 2%.

There are 3 clubs participating in football in the Ashburton District. According to the two groups that we met with (Methven FC and Mid Canterbury United FC) there are approximately 550 members as well as casual players participating in football. This is made up by approximately 50 junior teams, 5 intermediate teams and 6 senior teams.

### 3.2.5.2 FACILITY CAPACITY

There are currently four locations within the Ashburton District utilised for their football facilities and one utilised for futsal facilities. These are located at:

- Argyle Park
- Ashburton Domain
- Methven Domain
- Rakaia Domain
- EA Networks centre (futsal)

Table 10: Football facility capacity and quality

Facility	Junior Field	Senior Field	Indoor Court	Quality of facilities
Argyle Park	2	2	0	Fields are boggy in the winter and bone dry in the summer. Fields don't drain well and need additional maintenance. Lights need to be upgraded as they currently only cover part of the fields. Changing facilities are non-existent however there is storage on site and relatively new public toilets.
Ashburton Domain	6	3	0	Fields are of great quality, however room for enough fields is an issue. Pavilion is run down and in need of repairs however ownership seems to be unknown.
Methven Domain	0	2	0	Fields are in ok condition; weeds are prevalent and could do with an upgrade. Lights have been recently upgraded. Changing facilities are in working order but could do with some cosmetic changes to make them more user friendly.
Rakaia Domain	<i>Unknown</i>	<i>Unknown</i>	0	<i>Unknown</i>
EA Networks centre (futsal)	0	0	4 Standard 1 International	Courts and facility are in good condition.

Football in the Ashburton District is participated in competitively during the winter months and more socially during the summer months. Mid Canterbury United FC runs a competitive and social futsal competition indoors at EA over the summer months while Methven FC run a social outdoor football session over the summer. The table below depicts the maximum utilisation of football facilities.

Table 11: Football facility utilisation - winter

Facility	Monday	Tuesday	Wednesday	Thursday	Friday	Saturday	Sunday
Argyle Park		4pm-7pm	4pm-7pm	4pm-7pm			
Ashburton Domain						9am-12pm	10am-12pm
Methven Domain		5pm-9pm		3pm-9pm		10am-5pm	
Rakaia Domain (unknown)							

EA Networks centre (futsal)							
-----------------------------	--	--	--	--	--	--	--

Summer utilisation for the EA Networks centre is also shown within Section 3.3.1.

Table 12: Football facility utilisation - summer

Facility	Monday	Tuesday	Wednesday	Thursday	Friday	Saturday	Sunday
Argyle Park							
Ashburton Domain							
Methven Domain			6pm-8pm				
Rakaia Domain (unknown)							
EA Networks centre (futsal)	6pm-8pm						1pm-8pm

It is understood that the Rakaia FC does not have a senior team, however there may be a junior team who participates in the local competition. It is understood that there may be some fields based at the Rakaia Domain, this was unable to be confirmed.

### 3.2.5.3 COMMENTS THROUGH ENGAGEMENT

Through engaging with Mid Canterbury United FC and Methven FC, we heard the following information:

- Ashburton Domain
  - MCUFC utilise Argyle Park for training and Ashburton Domain for games.
  - There is a lack of open communication between football and cricket at the Ashburton Domain. Cricket has erected several additional grass cricket wickets without consulting football. This meant that for the previous year (2022) the third football field was unable to be used as there was a cricket wicket in the middle of it.
  - Ashburton domain field is often complemented by travelling players about how good the condition is.
  - There are no lights at the domain, so night football is not an option.
  - It is unknown who the facility belongs to that the club utilises for changing rooms, would be good if this had a higher level of upkeep during the summer/ winter sport handover.
  - There is a lack of understanding of who to talk to about facility repairs at the domain.
  - Domain is getting busier, and parking is difficult.
  - There are some difficulties recorded booking the Ashburton Domain.
- Argyle Park
  - During summer Argyle Park is bone dry and trainings have had to be cancelled/ cut short due to risk of injury. However, during the winter, the fields are often boggy and don't drain well.
  - The lights at Argyle Park have unknown ownership however the football club manages the power bill.
  - The lights at the park do not cover the full extent of the fields which can make it difficult to train in the winter. Are in the process of upgrading these.

- Facilities at Argyle Park are inadequate; there are no changing or clubrooms. If there was a changing room that the football club could utilise then the club would be able to move down to Argyle.
- Methven Domain
  - MFC utilise Methven domain for training and games.
  - There are currently no difficulties recorded booking Methven Domain.
  - Cost of field hire and land for clubrooms is expensive.
  - 1 day per week there is a Nepalese game down at the Methven Domain
  - Clubrooms were purchased off the hockey club in 2020.
  - Outside of the 2 fields at the domain there is no further room for expansion.
  - Fields drain well however there is a weed problem as approximately 60% of the field is weeds.
- EA Networks Centre
  - There are some difficulties recorded booking EA Networks Centre for futsal when required.
  - The prices keep raising at EA which is at the detriment to the game. A booking is more than double the cost of a casual user game.
- Other comments
  - Both groups were either neutral or satisfied with the facilities they utilise.

### 3.2.5.4 GAPS

It is apparent that there is a level of conflict between cricket and football at the Domain which is causing overlap issues between the sport seasons. One sports growth will be at the detriment of the other especially as cricket pitches are permanent year-round effecting where football fields can be on site. If this continues, then there is opportunity for Argyle Park to increase its utilisation as the home of football in Ashburton however improvements to the field quality and surrounding infrastructure (lights and changing rooms) would need to be implemented to make this a successful transition.

There is also opportunity for Rakaia domain to be utilised further for football if the sport grows out in the township. Currently the club falls under the MCRUFC and therefore utilises the facilities that they do.

In terms of futsal, there seems to be a high level of difficulty booking open court space and the sport would likely support an addition of further court space, however it is noted that the expense of current court hire is high, and any further cost increase would be at the detriment of the sport.

### 3.2.6 HOCKEY

	Number
Total number of groups contacted	1
Total number of groups engaged with through survey	1
Total number of groups engaged with through in-person meetings	1

#### 3.2.6.1 TRENDS

Hockey participation in Ashburton District schools has seen an overall decline in participation between 2017 and 2021 (1.6% decline). Peak participation was in 2011 (5.3%) and lowest participation was recorded in 2009 (2.2%).

Hockey participation for adults in the Ashburton District sits in line with the national average of 1.6%. Trends shown at a regional level (Canterbury) for hockey show that between 2020 and 2011 interest in sport has dropped by 4% attendance at a sport event has dropped by 2% and participation in the last year has dropped by 1%, whilst likelihood to participate in the next 6 months has not changed.

According to Mid Canterbury Hockey there are approximately 520 members as well as casual players participating in hockey within the Ashburton district. This is made up of 24 junior clubs and 16 senior clubs.

### 3.2.6.2 FACILITY CAPACITY

There is currently one full turf facility for hockey located within the Ashburton District and a half hockey pitch, excluding facilities on school grounds, these facilities are located at:

- Ashburton Domain
- Rakaia Domain

Table 13: Hockey facility capacity and quality

Facility	Full Pitch	Half Pitch	Quality of facilities
Ashburton Domain	1	0	Facility was replaced in 2013 after the 2011 earthquake. Carpet is now starting to show its age (as expected) and will need to be replaced within the short-medium term (2-3 years). Pavilion could do with cosmetic repairs but nothing structural. Lights are not LED and may look to upgrade within the next 2-5years.
Rakaia Domain	0	1	Turf hasn't been utilised in the last few years and is in a state of disrepair.

Hockey in the Ashburton District is participated in competitively during the winter months and more socially during the summer months. Previously mid canterbury ran a social hockey league in the summer and has the intention to bring this back in the future. In addition to this Mid Canterbury Hockey run a secondary school's tournament for the South Island, this has been running annually and lasts for about a week. There are also representative games played towards the end of the season.

In addition to the utilisation outlined below there are also other groups that utilise the turf during the winter if the fields are too wet this includes: Ashburton College (PE classes) and football.

Table 14: Hockey facility utilisation - winter

Facility	Monday	Tuesday	Wednesday	Thursday	Friday	Saturday	Sunday
Ashburton Domain	3:30pm – 9pm	3:30pm – 9pm	3:30pm – 9:30pm	3:30pm – 9:30pm	3:30pm – 9pm	9am – 12pm	5:30pm – 8:30pm
Rakaia Domain (unknown)							

Table 15: Hockey facility utilisation - summer

Facility	Monday	Tuesday	Wednesday	Thursday	Friday	Saturday	Sunday
Ashburton Domain			6:30pm – 8:30pm	7pm – 9:30pm			

Rakaia Domain (unknown)							
----------------------------	--	--	--	--	--	--	--

### 3.2.6.3 COMMENTS THROUGH ENGAGEMENT

Through engaging with Mid Canterbury Hockey, we heard the following information:

- The turf is a great wet weather option for other sport codes if their fields are too wet.
- The turf carpet will need to be replaced within the next 2-3 years.
- The facility is currently at capacity in the winter with hockey on every night of the week. They have explored the idea of a second turf at the domain; however, they understand that this could be contentious.
- Previously Rakaia would have a few junior games per year however the half turf is now unused and in need of repair.
- There are various other half turfs in the district on school grounds which are used at times for junior games (Methven and Ashburton intermediate)
- The club reported that they were neutral to the quality of facilities they are using.
- The club is currently not facing difficulties with booking their facility.

### 3.2.6.4 GAPS

Analysing the network within the Ashburton district there seems to be multiple half turfs which are utilised for junior hockey. There is only one turf in the district which can be utilised for senior hockey. The utilisation of this site is currently in high use from Monday – Friday and moderate use over the weekends. It seems unlikely that the sport would be able to continue to grow if there was not another hockey turf within the Ashburton District. This should be further explored.

## 3.2.7 NETBALL

	Number
Total number of groups contacted	6
Total number of groups engaged with through survey	4
Total number of groups engaged with through in-person meetings	1

### 3.2.7.1 TRENDS

Netball in Ashburton District schools has seen a steady increase in participation since 2016. Between 2018 and 2021 participation levels have increase by 1.1% making it the largest participation increase for school sport in the Ashburton District. If we consider wider data between 2006 and 2021 the sport has seen a 1.9% decrease in participation. It could be suggested that this large participation increase has come about through the opening of the EA Networks centre which opened in 2015. Before this the sport was played largely on outdoor courts.

Netball participation for adults in the Ashburton District sits in line with the national average of 3.0%. Trends shown at a regional level (Canterbury) for netball show that between 2020 and 2011 there has been a 10% decrease in interest in the sport as well as an 5% decrease in participation over the last year and a 4% decrease in attendance at a sport event. Likelihood to participate over the next 6 months has increased by 2%.

According to Mid Canterbury Netball, there are approximately 1,300 players and 70 teams in their winter netball competition. There are also an additional 12 junior teams and 32 senior teams who play netball socially in the summer.

### 3.2.7.2 FACILITY CAPACITY

There is currently one indoor facility utilised for netball located within the Ashburton District excluding school facilities. There are also seven outdoor court facilities located across the district that are used at times for training when clubs are unable to use indoor facilities. These facilities are located at:

- EA Networks Centre
- Tinwald Domain
- Mayfield Domain
- Mount Somers Domain
- Rakaia Domain
- Methven Domain
- Hampstead Rugby & All Sports Club
- Allenton Rugby Football Club

Table 16: Netball facility capacity and quality

Facility	Indoor Courts	Outdoor Courts	Quality of facilities
EA Networks Centre	4	2	Floors could use more regular cleaning to prevent slip hazards. Hoops and nets may need to be replaced within next 5 years.
Tinwald Domain	0	2	Netball courts are rarely used. Lighting across courts looks aged however asphalt base looks in good condition. Rarely used now that EA is in place.
Mayfield Domain	0	2	Outdoor courts also have facilities for tennis and looks aged. Lighting across courts looks aged. Rarely used now that EA is in place.
Mount Somers Domain	0	2	Outdoor courts also have facilities for tennis and looks aged. Lighting across courts looks aged. Rarely used now that EA is in place.
Rakaia Domain	0	2	Lighting across courts looks in ok condition. Courts are also utilised for tennis as well as hockey down the far end. Rarely used now that EA is in place.
Methven Domain	0	3	Courts are in good condition and lines look freshly painted. Courts are also utilised for tennis. None of the courts have adequate lighting.
Hampstead Rugby & All sports Club	0	2	Lighting in the courts is in good condition, asphalt needs repair in some places and lines need to be repainted. Courts are used at times for trainings when teams can't get court practice at EA.
Allenton Rugby Football Club	0	4	Lighting in the courts look to be in ok condition, asphalt needs repair and lines need to be repainted. Rarely used now that EA is in place.
Total courts	4	17	

### 3.2.7.3 COMMENTS THROUGH ENGAGEMENT

Through engaging with Mid Canterbury Netball through in person consultation, we heard the following information:

- Facing difficulties with booking space at EA Centre



- Outlined that all clubs were struggling to book court space at EA to train indoors.
- Commented that the court space needs more regular cleaning.
- Cost of court hire is too high.
- We are seeing more applications to our hardship fund which we can't keep up with, as subs keep going up due to the cost of EA continually increasing.
- EA shouldn't be about making money it should be about providing recreation opportunities for the community.
- Neutral satisfaction about the quality of the facility.
- Our numbers have grown far more since being outside.
- Netball would be able to grow further if there was more space.
- Covering courts outside and allowing for netball competition to be played out there would be great.
- Summer league is at capacity and teams are being waitlisted as there is not enough space.
- Run off space between courts is sometimes a health and safety hazard for umpires as the space is too small.
- Where there seems to be space at EA this is during the day and not a time that we can utilise the space for our clubs.
- No one books the outdoor courts at EA, and they are not an attractive option for clubs to train on.
- The outdoor courts at EA don't have padding on the goal posts so it is a health and safety hazard.
- Sport is currently at capacity and can't grow without more indoor space.
- 3 schools are currently building classrooms on their netball courts which may mean that more schools are needing to utilise court space in the future.

We heard back from 3 netball clubs in the Ashburton district who responded to our survey, of these 3 clubs we heard the following information:

- All clubs said they were facing difficulties booking space at EA.
- Two clubs cannot get practice booking times for 2023 while another club has had difficulty getting space.
- In previous years clubs have had to share court space to train indoors.
- Clubs commented that they currently train at unfavourable times due to lack of court space at EA.
- One club commented that the cost of court hire was too expensive.
- One club commented that the lines needed to be repainted at Hampstead Outdoor Courts.
- Two clubs commented that they had neutral satisfaction of the facilities and one recorded that they were satisfied with the facilities.

#### **3.2.7.4 GAPS**

Through engaging with Mid Canterbury Netball and other netball clubs in the Ashburton District it is apparent that lack of indoor court space is a major issue for the sport. The sport is facing capacity issues and unable to expand in some areas such as summer social netball due to lack of space. Clubs are also struggling to book indoor space for training with some clubs recording an inability to get indoor space for the 2023 season due to lack of court space.

Netball is aware that they take up much of the indoor court space at EA especially in the winter however they are also having difficulties with the lack of space. It is likely that additional indoor court space would be well utilised by netball.

### 3.2.8 PICKLEBALL

	Number
Total number of groups contacted	1
Total number of groups engaged with through survey	1
Total number of groups engaged with through in-person meetings	0

#### 3.2.8.1 TRENDS

Pickleball is a court game, played either out of doors or indoors, and it can be played by most ages and abilities. Play is with two (singles) or four (doubles) players. The court is similar in size to a double's badminton court, 6.09 meters wide and 13.41 meters long. Sport New Zealand does not currently collect data on pickleball. Pickleball New Zealand states that the sport has experienced terrific growth over the past three years with many new locations popping up frequently and that as of 2020, there are an estimated 2,000 players throughout the country, playing at 40 different locations.

Ashburton District currently has one pickleball association based in Ashburton township. The club has an estimated 20 members along with additional casual players. Participants show up on the day and are organised into games.

#### 3.2.8.2 FACILITY CAPACITY

There is currently one facility for pickleball located within the Ashburton District. This facility is located at EA Networks Centre booking details of the space can be found in Section 3.3.1.

Table 17: Pickleball facility capacity and quality

Facility	Facilities	Quality of facilities
EA Networks Centre	12 Courts	Great facility and in relatively new condition. Some comments made about a leak in the roof. Paddles are well worn and in need of replacing.

#### 3.2.8.3 COMMENTS THROUGH ENGAGEMENT

Through engaging with Ashburton Pickleball, we heard the following information:

- The stadium is a very good facility, and we are lucky to be able to use it.
- We are appreciative of the support we receive from stadium management.
- The stadium is simply not big enough.
- Organisation is having difficulty to book court space at times that are suitable to allow for the growth of the sport.
- Netball takes priority at EA which means that minority sports like pickleball have limited options to book.
- We have had numerous people come to pickleball who have said they would like to be involved but our times are simply not suitable for workers and families.
- We have tried several times to move to better times however despite the best endeavours of the stadium staff this just isn't possible.
- An additional 2 courts at EA would give us and other smaller groups space to grow and develop.

### 3.2.8.4 GAPS

It is apparent that Pickleball can no longer expand due to the lack of space at peak times at EA Networks Centre. More space at EA would allow for pickleball to expand and offer more user-friendly times for families and workers.

### 3.2.9 RUGBY

	Number
Total number of groups contacted	10
Total number of groups engaged with through survey	8
Total number of groups engaged with through in-person meetings	10

#### 3.2.9.1 TRENDS

Rugby participation in Ashburton District schools has seen declining participation between 2016 and 2020. The sport saw a peak in participation of 13.4% in 2016 however fell to 5.4% by 2020, an 8% decrease. Between 2020 and 2021 the sport saw a change in this trend and participation increased by 3.9%. Since 2005 sport participation has decreased by 2.3%.

Rugby participation for adults in the Ashburton District sits 0.1% below the national average of 2.1%. Trends shown at a regional level (Canterbury) for rugby show that between 2020 and 2011 there has been a 17% decrease in interest in the sport, the largest decrease of any sport in the Canterbury region. There has also been a 9% decrease in likelihood to participate in the next 6 months, a 3% decrease in participation in the last year and a 1% decrease in attendance at a sport event.

There are 9 rugby clubs within the Ashburton District and one overarching rugby union. Calculated from the numbers provided from these clubs there are approximately 3,310 rugby club members in the Ashburton District, this is made up of approximately 1,814 players across 92 junior teams and 16 senior teams.

#### 3.2.9.2 FACILITY CAPACITY

The Ashburton District rugby clubs operate on a mixture of privately owned and Council owned land, additionally there is also the governing body, Mid Canterbury Rugby Union who operate out of the A&P Showgrounds. There are 11 facilities utilised for rugby, the 10 clubs and organisations are located at:

- Allenton Rugby Football Club
- Ashburton Celtic Rugby Football Club
- Collegiate Rugby Football Club
- Hampstead Rugby & All sports Club
- Methven Rugby Club – Methven Domain
- Mid Canterbury Rugby Union – Ashburton A&P Showgrounds
- Mount Somers Rugby Club – Mount Somers Domain
- Rakaia Rugby Football Club – Rakaia Domain
- Tinwald Rugby Football Club – Tinwald Domain
- Southern Rugby – Hinds Domain and Mayfield Domain

Rugby in the Ashburton District is participated in competitively during the winter months and in the summer a few of the clubs run social touch rugby competitions. In addition to this Mid Canterbury Rugby Union host heartland rugby games and other clubs may play host to teams from outside of the

Ashburton District for exchanges, games, or tournaments. There are also representative games played towards the end of the season.

Table 18: Rugby facility capacity and quality

Facility	Junior fields	Senior fields	Lit fields	Quality of facilities
Allenton Rugby Football Club	2	2	2 junior 1 senior	Lighting for training and playing need upgrading, currently no lighting on the senior field and looking to try do this over the next few years. Clubrooms and changing room facilities require maintenance along with septic tank upgrade. Interior toilets are looking to be upgraded soon. Main field is about to be sown again and fields are free draining.
Ashburton Celtic Rugby Football Club	1	3	2.5 senior	Fields are well maintained and on a maintenance programme, lights are to a high standard, grandstand looks relatively new, and clubrooms have had recent renovations. Additional changing rooms currently under construction.
Collegiate Rugby Football Club	2	1	1 senior	Changing rooms are no longer fit for purpose. Clubrooms could do with cosmetic repairs to furniture. Clubroom roof has been prone to leaking and may need to be replaced in the long term. Grass has been renewed but not in the best condition.
Hampstead Rugby & All sports Club	2	1	1 junior 1 senior	Fields are quite hard and depending on rain can be quite chewed up by July. Fields are used year-round by rugby and softball. The lights on the fields need upgrading and have plans to complete this before next rugby season. Showers are currently being upgraded. Kitchen upgrade is forecast for the future. Recently upgraded carpark and front gate. Relief sewer council installed lets off raw sewerage smell when the wind is blowing in the right direction, request to fix this. Also have MMA group leasing facilities as well.
Methven Rugby Club	2	3	2 senior	Clubrooms are owned in partnership with Methven cricket (united clubrooms) and the changing sheds are owned by rugby. Site has dual use (cricket and touch rugby in summer and rugby in winter). New roof required for clubrooms. Some of the fields are uneven and in need of upgrade. Awaiting consent for women's changing rooms and indoor sheds. Lights were upgraded this year.
Mid Canterbury Rugby Union	0	3	1.5 senior	Fields drain well however they become ruined by divots when horses come onsite. Health and safety issue when horse manure is left on playing fields. Site is difficult to fence during Heartland Rugby home games. Facilities are old and tired and need some refurbishment. Main oval currently isn't lit so cannot play night rugby. Changing rooms need remodelling and refurbishment, some areas are not currently fit for purpose (i.e., clear glass where you can see inside).

				Office space and meeting areas could do with refurbishment. Grandstand is tired.
Mount Somers Rugby Club	2	1	1 senior	Senior field is well maintained throughout the year. Back junior fields are left to grow in the summer and then bailed and sold as hay. Club has plans to extend and remodel the clubrooms to make it function better.
Rakaia Rugby Football Club	1	3	1 junior 2 senior	Clubrooms were condemned not long ago, and plans have been approved for a new clubroom, current changing rooms will be demolished and built into the new clubrooms, expected that this will be complete by the 2024 season. Currently using the bowls club as the on-site clubrooms. Council have funded new toilets on site which will be part of the new clubrooms structure. Looking to upgrade the lights on site for night games. Recently sold the old rugby clubrooms located in the Rakaia township.
Tinwald Rugby Football Club	2	2	2 senior	Clubrooms are based off-site at the Tinwald Family Sport and Recreation Centre. Looking to refurbish kitchen. Changing sheds are located onsite and have been freshly painted on the exterior and interior, showers have been renovated. Grounds are well draining and hold up well in the winter and rain. Field lighting need to be refurbished.
Southern Rugby – Hinds	2	3	2 senior	Field drains quite well but they are in a flood plain. Clubroom toilets and bar have recently been refurbished. Changing shed are almost brand new. Next step is upgrading the kitchen.
Southern Rugby – Mayfield	1	3	1 senior	Field used seldom during the year (2-3 times)) however look to be in good condition. Mayfield fields drain more efficiently than Hinds fields and southern rugby teams travel to train at Mayfield if there has been too much rain. Changing rooms are old, however, they suit the current needs.
Total fields	17	25	4 junior, 2 half fields, 16 senior	

Weekend draws are dependent on where clubs are playing for that week, however the utilisation shown in the tables below depict max utilisation. Most clubs also hire out their clubrooms for private functions such as birthdays, weddings, and funerals. Two clubs also facilitate touch rugby leagues which is the summer utilisations for the clubs, this can be found in the touch rugby section of this report.

Table 19: Rugby facility utilisation - winter

Facility	Monday	Tuesday	Wednesday	Thursday	Friday	Saturday	Sunday
Allenton Rugby Football Club		3-7:30pm	3-7:30pm	3-7:30pm		11:30am – 5pm	

Ashburton Celtic Rugby Football Club		6pm-8:30pm	6pm-8:30pm	4pm-8pm		10am-4pm	
Collegiate Rugby Football Club		7pm-8:30pm	4pm-6pm	4:30pm-8:30pm		12pm-4:30pm	
Hampstead Rugby & All sports Club		4:30pm – 8:30pm	4:30pm – 8:30pm	4:30pm – 8:30pm		11am-5pm	
Methven Rugby Club		5:30pm-8:30pm	4pm-5pm	4pm-8:30pm			
Mid Canterbury Rugby Union	6pm-9pm (March – June)	6pm-9pm (March – Oct)	6pm-9pm (March – June)	6pm-9pm (March – Oct)			
Mount Somers Rugby Club				3:30pm-4:30pm & 7pm-9pm		11am-4pm	
Rakaia Rugby Football Club		7pm-9pm	4:30pm-5:30pm	7pm-9pm			
Tinwald Rugby Football Club	4pm-5pm	6pm-7pm	4pm-5pm	4pm-7pm			
Southern Rugby – Hinds		6:30pm-9pm		3pm-9pm		10:30pm-4:30pm	
Southern Rugby – Mayfield						10:30pm-4:30pm (few games per year)	

### 3.2.9.3 COMMENTS THROUGH ENGAGEMENT

Through engaging with the various rugby clubs within the Ashburton District, we heard the following information:

- None of the clubs are having difficulty booking their facilities.
- Seven out of nine clubs were either satisfied or mostly satisfied with the quality of their facilities.
- Two out of nine clubs let their grass grow long in the summer and bail up the hay as a fundraiser.
- Allenton is looking to engage cricket in the summer to become dual use.
- Allenton has recently leased a block of land to the caravan association, which has gone over two of their previously utilised fields.
- Most clubs try not to train on their main field and keep this for game day only.
- Most clubs were interested in or preparing for the possibility of night games by upgrading lights.

- All clubs on private land (four out of nine) commented that the cost of rates was proving difficult for the clubs to meet, and the cost was being passed on to players/ members.
- A few clubs mentioned about the difficulty getting dog walkers to pick up after their dogs on the park. The Mid Canterbury Rugby Union also mentioned about the difficulty being based at a location where there are frequently horses on the field.
- Two clubs mentioned a lack of volunteers has been hard on the club. With one club mentioned that this makes succession planning difficult.
- [REDACTED]
- One club mentioned they were struggling to remain financially viable.
- No clubs currently have specific female changing rooms however three clubs have mentioned thinking about this or are in the process of building additional changing rooms.
- One club mentioned they would be interested in understanding how they would fit in if a sports hub was to be established in Ashburton by Council.
- One club mentioned that they were initially approached by council to move down to EA, however the 30-year lease that was offered was not long enough.
- Most clubs stated that sales over the bar was their main source of income. A few said that if it wasn't for this income then the club would not be viable.
- Multiple clubs mentioned there was confusion from the club around the terms of their lease and one club on council land mentioned they had not seen a lease agreement.
- Four clubs mentioned they were looking to upgrade their lights in preparation for more night games/ trainings.
- Union currently relies heavily on the well-established clubs to run tournaments and night games.
- High level of conflict between the rugby and equestrian sports season crossover on the showgrounds.

#### 3.2.9.4 GAPS

Through engaging with the rugby clubs and union groups there are a few common themes. It seems that there is an oversupply of rugby clubs within the Ashburton township and there is one club that is struggling amidst growing expenses. There may be an opportunity to merge with another club or merge with another sport to help share costs.

Other themes were that there is a growing desire for night rugby in the district however the current lighting infrastructure is not fit for purpose to meet this desire. Four clubs mentioned that they were either looking into or in the process of upgrading their lights. This should be checked against lighting standards to ensure that money is being spent correctly to make these facilities fit for purpose.

The Mid Canterbury Rugby Union is in direct conflict with equestrian onsite at the A&P showgrounds which is making the site not fit for purpose for rugby, the union is in the process of assessing this situation. If the Union decides to move offsite, it is unlikely that building new grounds would be the best option. Merging with another club and upgrading current assets would be a better option as there is already an oversupply of fields within the network that are underutilised (e.g., Methven Domain and Argyle Park).

#### 3.2.10 RUGBY LEAGUE

	Number
Total number of groups contacted	1
Total number of groups engaged with through survey	1

Total number of groups engaged with through in-person meetings	0
--	---

### 3.2.10.1 TRENDS

Rugby League in the Ashburton District has seen low levels of school sport participation. With a peak in participation in 2008 (3.6%) outside of this the sport has seen 0% participation at a school level according to the Sport New Zealand Insights tool.

Rugby League participation for adults in the Ashburton District sits 0.4% below the national average of 0.7%. Trends shown at a regional level (Canterbury) for Rugby League between 2020 and 2021 shows an 11% decrease in the interest in the sport and a 1% decrease at attendance at a sport event and likelihood to participate in the next 6 months and participation over the last year.

There are approximately 25 members participating in rugby league within the Ashburton District according to the Ashburton Barbarian Rugby League club. This comprises 4 junior teams (U7, U9, U11 and U13) who compete in the Aoraki competition running 4-6 weeks per year as well as 1 senior team.

### 3.2.10.2 FACILITY CAPACITY

There is currently 1 facility for rugby league located within the Ashburton District this facility is located at:

- Robillard Park

The club also pays the squash club onsite (Collegiate South Squash Club) to utilise their power and changing rooms. For after match functions the club travels offsite to The Devon Tavern.

Table 20: Rugby league facility capacity and quality

Facility	Facilities	Quality of facilities
Robillard Park	1 field	Field maintenance is consistent and looks to be in good condition. Club has outlined that there is a need to update the goal posts however the club is unsure of the ownership over these assets.

The club has been utilising Robillard park for rugby league for around 8 years. The club participates in rugby league three nights during the winter season with trainings on a Tuesday and Thursday and games played on a Saturday either at home or away as outlined in the table below.

Table 21: Rugby league facility utilisation

Facility	Monday	Tuesday	Wednesday	Thursday	Friday	Saturday	Sunday
Robillard Park		3-9pm		3-9pm		12-3pm	

### 3.2.10.3 COMMENTS THROUGH ENGAGEMENT

Through engaging with the Ashburton Barbarians Rugby League Club, we heard the following information:

- Council has been putting more time into the upkeep of the field which is evident in the playing surface and appreciated by the club.
- The club is satisfied with the quality of the facilities/surfaces.



- The club does not currently have a clubroom to utilise and travel offsite for after match functions.
- The club isn't having any difficulty with their bookings and capacity.

### 3.2.10.4 GAPS

Engaging with the Ashburton Barbarians Rugby League Club, it is evident that the club is not currently having issues with bookings and capacity of the site. As this is a single field site there may be capacity issues in the future if the sport continues to grow.

### 3.2.11 SOFTBALL

	Number
Total number of groups contacted	2
Total number of groups engaged with through survey	1
Total number of groups engaged with through in-person meetings	1

#### 3.2.11.1 TRENDS

Softball in the Ashburton District has had fluctuant participation at a school level between 2005 and 2021. With peak participation in 2010 at 7.7% after recording 0% participation between 2005 and 2009. Participation then decreased until another 0% low in 2020 followed by a rise to 1.8% participation in 2021.

Softball participation for adults in the Ashburton District sits in line with the national average of 0.4%. Trends shown at a regional level (Canterbury) for baseball/softball show that between 2020 and 2011 there has been an 6% decrease in interest in the sport along with a drop in attendance at the sport (-1%) and a drop in participation over the last year (-2%). Likelihood to participate within the next six months showed a 1% increase.

There is one softball organisation within the Ashburton District, Mid Canterbury Softball, and 3 associated clubs within Ashburton. T-Ball a variation of the sport is played at a junior and school level.

#### 3.2.11.2 FACILITY CAPACITY

There are currently two facilities for softball located within the Ashburton District that are not on school grounds. These facilities are located at:

- Argyle Park
- Hampstead Rugby & All Sports Club

Table 22: Softball facility capacity and quality

Facility	Junior diamonds	Senior diamonds	Quality of facilities
Argyle Park	5	2	Facility would need some development to make a comfortable home for softball to include ancillary facilities. Storage facilities need cosmetic repairs. No clubrooms or changing rooms on site. However large space and ability to continue to develop new diamonds if necessary.
Hampstead rugby & all sports club	3	1	Facility with ancillary facilities on site (clubrooms, changing rooms, pitching machine with batting cage

			etc.) not used as regularly for softball compared to Argyle Park.
Total diamonds	8	3	

Softball is played across both Argyle Park and Hampstead Rugby and All Sports Club. It is important to note that Argyle Park utilisation is only shown for games on a Saturday. It is unknown if there is further use for trainings during the week.

Table 23: Softball facility utilisation

Facility	Monday	Tuesday	Wednesday	Thursday	Friday	Saturday	Sunday
Argyle Park						10:30am – 4pm	
Hampstead rugby & all sports club		4pm-6pm	4pm-6pm	4pm-6pm	4pm-8pm	10:30am – 4pm	

### 3.2.11.3 COMMENTS THROUGH ENGAGEMENT

Through engagement we reached out to Mid Canterbury Softball however could not make contact. Contact was made with the Hampstead Rugby and All Sports Club who also have a softball league. What we heard included:

- Club is mainly used for softball during the summer.
- Club provides a machine pitch league and slow pitch social league as well as competitive games on a Saturday.
- Argyle Park could use some upgrades to make it more of a sport hub.

### 3.2.11.4 GAPS

Through engaging with softball clubs in the Ashburton District more exploration could be given to the ancillary facilities such as clubrooms and changing sheds at Argyle Park. Further investigation, preferably with Mid Canterbury Softball, would need to be made to determine utilisation of the softball network and whether this would enhance player numbers and experience.

### 3.2.12 SQUASH

	Number
Total number of groups contacted	7
Total number of groups responded through survey	5
Total number of groups engaged with through in-person meetings	0

#### 3.2.12.1 TRENDS

Squash has been growing in popularity in Ashburton District schools since 2005. The sport has grown in participation by 2.9% between 2005 – 2021 and more recently increased by 0.9% between 2018 and 2021, the second largest increase in school sport participation behind netball, according to the Sport New Zealand Insights tool.

Squash participation for adults in the Ashburton District sits at 0.9% which is in line with the national average for participation. Trends shown at a regional level (Canterbury) for squash does not show trends between 2020 and 2011 however it does show that in 2020 5% recorded an interest in the

sport (0.4% below the national average), 2% recorded participating in the activity in the last year, 1% said they would be likely to participate in the next 6 months and 1% attended a sport event.

Of the 5 squash clubs in the Ashburton District that responded to the survey, there were a recorded 329 participants as well as casual players participating in various leagues outlined in the table below (Squash Midlands). The season is usually played from February/March through to December.

### 3.2.12.2 FACILITY CAPACITY

There are currently 7 facilities for squash located within the Ashburton District these facilities are outlined below:

- Ashburton Celtic Squash Club – Ashburton Celtic Rugby Football Club
- Ashburton Squash Club – Allenton All Sports Club
- Collegiate South Squash Club – Robillard Park
- Hinds Squash Club
- Mayfield District Squash Racquets Club – Mayfield Domain
- Methven Squash Club – Methven Domain
- Rakaia Squash Club – Rakaia Domain

Table 24: Squash facility capacity and quality

Club	Facilities	Leagues	Quality of facility
Ashburton Celtic Squash Club	Two courts and changing rooms downstairs with a viewing area, social room, and bar upstairs	Winter and Summer League competitions and host an annual tournament	Bathrooms could be upgraded along with buildings windows.
Ashburton Squash Club	Four courts, large social lounge, and a licensed bar facility	League squash is provided all year round with a summer league February – April, winter league May – August, and spring league October – December. Junior league is on Friday night during term 2 and 3	Facility needs extensive repair or demolition as it is not up to building code.
Collegiate South Squash Club	Three glass back squash courts, bar facilities and a function room	Winter, spring, and summer leagues usually on Wednesday or Thursday evening	Not provided
Hinds Squash Club	Facilities include two glass back courts and fully stocked bar	Monday / Wednesday Nights: Mens' League Thursday Nights: Women's League Friday Nights: Junior League	Planning on upgrading the changing rooms.
Mayfield District Squash Racquets Club	Two glass backed courts fitted with heat pumps and adjoining lounge area	Tuesday and Wednesday evening	Unknown
Methven Squash Club	Three squash courts	Club nights usually played on a	Courts need repainting.

		Wednesday and Thursday night from March until November	
Rakaia Squash Club	Three glass back courts, a great social area and full bar facilities	Weekly competitions organised from February through until December and usually played on Wednesday or Thursday evenings. Juniors are run on Mondays in Term 2	Unknown

Table 25: Squash facility utilisation<sup>3</sup>

Facility	Monday	Tuesday	Wednesday	Thursday	Friday	Saturday	Sunday
Ashburton Celtic squash club	6-9pm	6-9pm	6-9pm	6-9pm	6-9pm		
Ashburton squash club (senior club night unknown)					Jnrs Club night		
Collegiate south squash club				6-9pm (winter)			
Hinds squash club	Men's Club night		Men's Club night	Women's Club night	Jnrs Club night		
Mayfield district squash racquets club		6-9pm	6-9pm				
Methven squash club			Club night	Club night			
Rakaia squash club	Jnrs Club night		Club night	Club night			

### 3.2.12.3 COMMENTS THROUGH ENGAGEMENT

Through engaging with five of the squash clubs in Ashburton, we heard the following information:

- None of the clubs are facing difficulties with booking their facilities.
- Two clubs own their facilities, one club books their facility through the domain board, one club leases their building, and one club is affiliated with a rugby club.
- Four groups were either satisfied or most satisfied with the quality of their facilities. One group had neutral satisfaction.

<sup>3</sup> Utilisation for squash has been pulled together via both survey and online accounts.

- One club is planning on upgrading their changing areas.
- One club is planning on upgrading their bathrooms and windows.

### 3.2.12.4 GAPS

Through engaging with the five squash clubs, we heard back from, it is apparent that a few of the squash clubs are planning on minor repairs/ upgrades in the future. None of the clubs seemed to be having difficulty with space or booking times and as noted in the table above there are still other nights of the week that could be utilised for further growth of the game if clubs were to see a large increase in participation.



### 3.2.13 SWIMMING

	Number
Total number of groups contacted	7
Total number of groups engaged with through survey	0
Total number of groups engaged with through in-person meetings	2

#### 3.2.13.1 TRENDS

Swimming at a school level in the Ashburton District has seen fluctuant participation over the past 19 years. Since 2016 the sport has seen a 1.9% decline in participation. Peak participation was seen in 2012 (3.5%) and the lowest participation was recently in 2020 (0.8%).

Swimming participation for adults in the Ashburton District sits 0.7% above the national average of 13.5%. Trends shown at a regional level (Canterbury) for swimming show that between 2020 and 2011 there was a 4% decrease in interest in the sport, a 1% decrease in participation in the last year. There was no change in attendance at a sport event and a 3% increase in likelihood to participate in the next 6 months.

There are seven pools located within the Ashburton District. Most of these pools are causal pay per use or membership key hire for the season. Unfortunately, we were unable to gain details from most domain pools or Rakaia township on their membership numbers. The EA Networks Centre has around 62,000 annual visitors made up of a range of concession cards and casual use entries. The EA swim school has approximately 1,000 members and 20,000 school lessons per year. The only domain we managed to pull pool usage data from was the Tinwald Domain where there were 2,519 visits in the 2021/22 season which equated to an average of 27 visits per day over the 92 open days. It is important to note that this also includes family concessions, so the total number of patrons is likely higher than this.

#### 3.2.13.2 FACILITY CAPACITY

There are currently seven pools located within the Ashburton District these facilities are located at:

- EA Networks Centre
- Tinwald Domain
- Mayfield Domain
- Ruapuna Domain

- Hinds Domain
- Mt Somers Domain
- Rakaia Township

Recommendations from the '2021 Ashburton District Council Rural Pools Condition Assessment' were utilised when assessing facility quality. Not all the recommendations from this report have been pulled into this report where they do not affect the utilisation of the facility. The Condition Assessment report should be utilised to understand whole of pool facility upgrades.

Table 26: Swimming facility capacity and quality

Facility	Facilities	Quality of facilities
EA Networks Centre	Main pool, warm water pool, learn to swim pool, leisure pool, changing facilities, seating for parents, spa pool, sauna and steam.	Facility is relatively new but didn't completely maximise the space when installed for example no seating for parents initially at the learn to swim pool. Hydro and main pool are ramped for access and the spa has a hoist. Generally, in good condition and well looked after.
Tinwald Domain	Changing facilities, grassed areas, lane pool, junior pool.	Pool needs to be relined, currently losing a high level of water per day. Inclusion for more diversity would be a good idea here e.g., ramp into the pool. Changing rooms are dated and need improvement. Water circulation system is in poor condition. Facility could do with an overall refurbishment. Future provision for aqua play has been explored.
Mayfield Domain	Main pool, toddler pool and changing facilities.	Area surrounding the pool looks to be freshly painted and well maintained. Pool system in relatively good condition for its age. No toilet facilities on site and must exit the pool area to access the public toilets. Changing sheds are very basic with no roof. Pool tank will require paint in the medium to short term.
Ruapuna Domain	Main pool and changing rooms.	Changing rooms is made from tin shed and in need of repair. Pool tank recommended to be repainted. Upgrade works required to filtration system.
Hinds Domain	Main pool, toddlers pool.	Previously had a diving platform that has now been decommissioned. Previously had changing rooms that have been removed. Number of the filtration systems are showing wear.
Mt Somers Domain	Main pool, toddlers pool, changing rooms, storage.	Pool area in good condition and well maintained. Changing rooms are made of shipping containers. Pool circulation system generally fine for its age. No toilet facilities on site.
Rakaia Township	Main pool, slide, diving platform, changing rooms	Changeroom in need of repair. Pool tank to be stripped and repainted. Pool circulation in good

		condition for its age. Hydro slide was considered a hazard
--	--	--

Swimming pools are open in the Ashburton District primarily over the summer period with the EA centre open year-round. Several rural pools are key access only and not maned by a lifeguard so participants can access the pool when they would like, therefore it is difficult to understand total number of visitors, one family may have one key for six people.

Table 27: Swimming facility utilisation

Facility	Monday	Tuesday	Wednesday	Thursday	Friday	Saturday	Sunday
EA Networks Centre (main pool)	5:45am-7pm	5:45am-7pm	5:45am-7pm	5:45am-7pm	5:45am-7pm	7am-5pm	7am-5pm
EA Networks Centre (swim school pool)	9am-5:30pm	9am-5:30pm	9am-5:30pm	9am-5:30pm	9am-5:30pm	9am-12pm	
Tinwald Domain	12pm-7pm	12pm-7pm	12pm-7pm	12pm-7pm	12pm-7pm	12pm-7pm	12pm-7pm
Mayfield Domain ( <i>key pool</i> )							
Ruapuna Domain ( <i>key pool</i> )							
Hinds Domain ( <i>key pool</i> )							
Mt Somers Domain ( <i>key pool</i> )							
Rakaia Township ( <i>key pool</i> )							

### 3.2.13.3 COMMENTS THROUGH ENGAGEMENT

Through engaging with Council regarding pool facilities, we heard the following information:

- Tinwald Pool is not fit for purpose for senior trainings as the barrier wall cannot be tumble turned on. This limits the utilisation of the site.
- Tinwald pool is used as an overflow location for learn to swim when EA is at capacity or undergoing repairs.
- Most of the domain pools are limited to the hours that they can run (summer only) as the pools are not heated and not cleaned over the winter. This means that there is high pressure on EA during the winter season as there are no other pools in operation.
- Several of the pools do not have toilets on site.
- Several of the rural pools have run down changing facilities.
- Two of the rural pools have diving structures one of which has been closed due to a health and safety issue.
- Tinwald pool has a max capacity of 150, at times there is a queue.

- The EA swim school is very popular and full during opening hours.

#### 3.2.13.4 GAPS

The local community pools that are in the rural areas of the district seem to be servicing the community well. However, the infrastructure is becoming aged and will need to be repaired. A programme of works has been laid out within the '2021 Ashburton District Council Rural Pools Condition Assessment'.

It is apparent that the pools in the Ashburton district are being utilised at times to full capacity. There are certain elements that limit the network of pools within the district. The lack of heating at Tinwald pool limits the opening hours of the pool and the types of lessons that can occur. A modification here may alleviate some of the stressors on EA as the main centre for learn to swim. Additionally, the separator beam at the Tinwald pool has a gap which means that competitive swimmers cannot tumble turn off the wall and therefore cannot train there.

Despite the limitations of the separator beam, the Tinwald pool remains popular and often reaches its maximum capacity of 150 on hot days with patrons having to queue. If learn to swim and other classes were moved here this could significantly impact the casual use of the pool.

Other alternatives to sustain this growing need would be to investigate expansion of the learn to swim network within the EA Networks Centre and explore modification or expansion of the pool to include more pool space.

#### 3.2.14 TOUCH RUGBY

	Number
Total number of groups contacted	4
Total number of groups engaged with through survey	2
Total number of groups engaged with through in-person meetings	0

##### 3.2.14.1 TRENDS

Touch Rugby participation at a school level in the Ashburton District has seen fluctuant participation since 2005. However, since 2015 participation has been on a steady decline (4.9% decrease). Peak participation was in 2005 (6.7%) and the lowest participation was 2021 (0.9%) which is a 5.8% decrease over time.

Touch rugby participation for adults in the Ashburton District sits 0.1% above the national average of 2.5%. Trends shown at a regional level (Canterbury) for touch rugby show that between 2020 and 2011 there has been a 6% decrease in interest in the sport, a 5% decrease in participation over the last year and a 1% decrease in likelihood to participate in the next 6 months. Attendance at a sport event saw no change.

There are 3 touch rugby modules which are currently running in the Ashburton district. These are made up of Methven touch, southern rugby touch and Celtic touch. There was previously a module that was run by touch canterbury at Argyle Park for juniors however this is no longer running. Across these leagues there are approximately 8 junior teams and 21 senior/ mixed teams. One club did not have touch rugby team numbers, so it is likely this number is higher.



### 3.2.14.2 FACILITY CAPACITY

There are currently three grounds that are known and currently providing touch rugby modules located within the Ashburton District these grounds are located at:

- Methven Domain
- Celtic Rugby Football Club
- Southern Rugby Club (Hinds)

Table 28: Touch Rugby facility capacity and quality

Facility	Fields	Quality of facilities
Methven Domain	4	Fields are well maintained, and lines are mowed out for games. Lights are in place but not required for touch rugby season.
Celtic Rugby Football Club	2	Fields are well maintained and cared for. Lights are in place but not required for touch rugby season.
Southern Rugby Club (Hinds)	2	Fields are in good condition, drainage is good, but the fields are in a flood plain. Lights are in place but not required for touch rugby season.

Touch rugby has various senior and junior modules across the district. Each module is separate and does not play in games at other locations or with teams from other modules.

Table 29: Touch Rugby facility utilisation

Facility	Monday	Tuesday	Wednesday	Thursday	Friday	Saturday	Sunday
Methven Domain					5:30pm – 8pm		
Celtic Rugby Football Club				5pm – 7pm			
Southern Rugby Club (Hinds)					6pm – 8pm		

### 3.2.14.3 COMMENTS THROUGH ENGAGEMENT

Through engaging with various touch rugby and rugby clubs, we heard the following information:

- Touch Canterbury used to run a junior touch module out of Argyle Park. However resourcing means that the module is no longer running.
- Methven Touch has recently become affiliated with Touch Canterbury and run a successful module out of the domain.
- The Methven Rugby Club and Methven Touch module are not affiliated with each other however they have a great relationship.
- Methven touch currently runs 4 fields marked out over 3 rugby fields.
- The game out in Methven has been growing since affiliating with Touch Canterbury and expect that there will be more participants in years to come.
- Southern Rugby run a social family competition from October to mid-December. Each team is required to have 2 children per team.
- Touch rugby is participated in at Celtic rugby, the club runs a league for juniors, mixed and social.

#### 3.2.14.4 GAPS

Through engaging with various touch rugby clubs/ organisations in the Ashburton District it is apparent that touch is mostly social and there are enough fields in the network. Methven Touch reported that they may continue to grow, and potentially there is room for additional fields at the Methven Domain, this will require further confirmation.

There is also additional green space at Argyle Park if Touch Canterbury was to recreate the junior touch rugby module in Ashburton Township again.

#### 3.2.15 VOLLEYBALL

	Number
Total number of groups contacted	2
Total number of groups responded through survey	2
Total number of groups engaged with through in-person meetings	0

##### 3.2.15.1 TRENDS

Volleyball in the Ashburton District has seen a steady increase in school sport participation since 2005. After a peak in participation in 2019 (8.9%) participation has dropped off slightly to 7.5% in 2021. Overall, the sport has seen a 3.5% increase in participation between 2005 and 2021 according to the Sport New Zealand Insights tool.

Participation in Volleyball for adults in the Ashburton District sits in line with the national average of 1.0%. Trends shown at a regional level (Canterbury) for Volleyball between 2020 and 2011 shows a 3% decrease in the interest in the sport and a 2% decrease in participation over the last year. Both attendance at a sport event and likelihood to participate in the next 6 months show no change (0%).

There are 2 volleyball clubs within the Ashburton District (Ashburton Warriors and the Ashburton volleyball club). There are approximately 160 members participating in volleyball across both clubs within the Ashburton District. This comprises 4 junior teams and 16 senior teams.

##### 3.2.15.2 FACILITY CAPACITY

There is currently 1 facility for volleyball located within the Ashburton District excluding school facilities, this facility is located at:

- EA Networks Centre

Both clubs utilise the EA network booking system or direct email to the EA staff to book court space.

Table 30: Volleyball facility capacity and quality

Facility	Facilities	Quality of facilities
EA Networks centre	2 courts	Court upkeep is great and looks to be in good condition. Club has outlined that there is a need to update the net posts. The club is unsure of the ownership over these assets.

The clubs both use the EA Networks Centre for training and games. The clubs participate in volleyball on different nights of the week with one participating Thursday, Friday, and Saturday year-round in

the evening and the other participating on a Monday evening in the winter. Further booking detail for the EA Networks centre is shown in detail in Section 3.3.1.

### 3.2.15.3 COMMENTS THROUGH ENGAGEMENT

Through engaging with the volleyball clubs in Ashburton, we heard the following information:

- There is a mix in satisfaction of the quality of facilities at EA Networks Centre, one club was satisfied while the other was dissatisfied.
- Both clubs commented that one of the volleyball net poles was damaged and became a safety hazard. The tension would snap off, and the net would come down suddenly.
- One club commented that the nets were worn out at EA Networks Centre.
- One club commented that they have seen significant improvement in service and communication since management has changed at EA.
- One club commented that the court hire fee is very expensive.
- One club commented that the cleanliness of the floors and set up service should be improved.
- One club commented that court markings for volleyball were not available.
- One club commented that the roof leaked when it rained.

### 3.2.15.4 GAPS

Through engaging with the volleyball clubs in Ashburton, one club noted that they were having difficulty making bookings but didn't expand on specifically what the difficulty was. There was also a mixed view on the quality of the facility with one being satisfied and the other dissatisfied. It is expected that the club satisfaction with the facility would increase if improvements could be made in areas of court cleanliness and timely communication. One club also commented that there were not lines available for volleyball. It is assumed that this comment refers to the fact that only 2 courts with current markings for volleyball, and a further 2 courts that have no volleyball markings. If the sport continues to grow additional lines could be added to these courts to provide more space for volleyball.

## 3.3 Facilities

### 3.3.1 EA NETWORKS CENTRE

	Number
Total number of groups contacted	11
Total number of groups responded through survey	6
Total number of groups engaged with through in-person meetings	5

Information included within this section has pulled together various sport club bookings to be able to clearly analyse the formal bookings occurring at the EA Networks Centre. The tables in the following section do not include casual recreation bookings.

Further information on engagement with these sport activities can be found in earlier sections of this report.

### 3.3.1.1 EA NETWORKS CENTRE SUMMER BOOKINGS

Time	Monday				Tuesday				Wednesday				Thursday				Friday				Saturday				Sunday			
Court	1	2	3	4	1	2	3	4	1	2	3	4	1	2	3	4	1	2	3	4	1	2	3	4	1	2	3	4
8-8:30am																												
8:30-9am																												
9-9:30am																												
9:30-10am																												
10-10:30am																												
10:30-11am																												
11-11:30am																												
11:30-12pm																												
12-12:30pm																												
12:30-1pm																												
1-1:30pm																												
1:30-2pm																												
2-2:30pm																												
2:30-3pm																												
3-3:30pm																												
3:30-4pm																												
4-4:30pm																												
4:30-5pm																												
5-5:30pm																												
5:30-6pm																												
6-6:30pm																												
6:30-7pm																												
7-7:30pm																												
7:30-8pm																												
8-8:30pm																												
8:30-9pm																												
9-9:30pm																												
9:30-10pm																												

	Netball
	Basketball
	Badminton
	Pickleball
	Futsal
	Volleyball

### 3.3.1.2 EA NETWORKS CENTRE WINTER BOOKINGS

Time	Monday				Tuesday				Wednesday				Thursday				Friday				Saturday				Sunday			
Court	1	2	3	4	1	2	3	4	1	2	3	4	1	2	3	4	1	2	3	4	1	2	3	4	1	2	3	4
8-8:30am																												
8:30-9am																												
9-9:30am																												
9:30-10am																												
10-10:30am																												
10:30-11am																												
11-11:30am																												
11:30-12pm																												
12-12:30pm																												
12:30-1pm																												
1-1:30pm																												
1:30-2pm																												
2-2:30pm																												
2:30-3pm																												
3-3:30pm																												
3:30-4pm																												
4-4:30pm																												
4:30-5pm																												
5-5:30pm																												
5:30-6pm																												
6-6:30pm																												
6:30-7pm																												
7-7:30pm																												
7:30-8pm																												
8-8:30pm																												
8:30-9pm																												
9-9:30pm																												
9:30-10pm																												

	Netball
	Basketball
	Badminton
	Pickleball
	Futsal
	Volleyball

### 3.3.1.3 GAPS

This summary has been pulled together by analysing comments made in earlier sections with specific sports. Further detail of this engagement can be found in these sport specific sections.

- There is an oversubscription of court space during peak times (evenings Monday-Friday).
- Groups are missing out on court space who would otherwise like to be training or playing indoors. It is possible that even with an extension to court space this would be at high utilisation within a short timeframe.
- The booking system at EA Networks Centre does not allow for live updates. This means that groups cannot book court space last minute or offer court space last minute if a pre-booked space is no longer needed. Offering this service could provide an alternative for groups who do not have permanent space.
- The cost of bookable court space is more than double that of a casual use booking and is becoming too expensive for the clubs.
- Minority sports are finding it difficult to grow their sports due to lack of court space.
- Multiple comments heard that the roof in the court space leaks.
- Lack of atmosphere in the foyer and common areas during the evenings as the court closes after the pool.
- Facility is too small to hold large scale tournaments.
- Lack of communication at times between user groups.
- Cannot promote other sports for evening time slots as these are all taken up. Only available time is during the day, but this is not when groups require use the facility.

### 3.3.2 EA FITNESS CENTRE

	Number
Total number of groups contacted	1
Total number of groups engaged with through survey	0
Total number of groups engaged with through in-person meetings	1

#### 3.3.2.1 TRENDS

Going to the gym did not have participation trends at a school level in the Ashburton District.

Going to the gym participation for adults in the Ashburton District sits 0.1% below the national average of 0.1%. Trends shown at a regional level (Canterbury) for going to the gym/ working out show that between 2020 and 2011 there has been an 8% decrease in interest in the activity and a 4% decrease in participation over the last year. However there has also been a 1% increase in the likelihood to participate in the next 6 months and the attendance at a sport event.

There are approximately 7 commercial gyms as well as a range of personal trainers who run fitness classes in outdoor locations in Ashburton and the council owned EA Networks Centre fitness centre.

#### 3.3.2.2 FACILITY CAPACITY

There is currently one council-owned fitness centre within the Ashburton District. This facility is located at:

- EA Networks Centre

Table 31: EA fitness centre facility capacity and quality

Group	Facility	Quality of facilities
EA Networks Centre	Gym floor, group fitness classrooms, spin studio, changing facilities, toilets, outdoor gym area	Gym is relatively new, and all the equipment is well maintained. Class areas have been modified to fit the needs of the community.

The gym has also tried other initiatives such as women's only gym nights and don't aim to be a 24/7 gym. The gym has an objective to not be in direct conflict with other commercial gyms in the Ashburton Township.

Table 32: EA fitness centre facility utilisation

Facility	Monday	Tuesday	Wednesday	Thursday	Friday	Saturday	Sunday
EA Networks Centre	6am-8pm	6am-8pm	6am-8pm	6am-8pm	6am-8pm	7am-6pm	7am-6pm

### 3.3.2.3 COMMENTS THROUGH ENGAGEMENT

Through engaging with Council, we heard the following information:

- The gym is a great facility with a solid service.
- We do not aim to be a 24/7 service.
- The gym exists to provide the best service for the community.
- We provide personal trainers who can provide personalised fitness programs.
- One of the biggest assets is the green space and the court space which is connected to the gym.

### 3.3.2.4 GAPS

The EA Networks Centre gym provides an asset to the community and fills a gap that is not being offered elsewhere within the Ashburton District. Members can gain access to the gym, the pool and group fitness classes within a central location and single membership. It does not seem that there is currently a need for an expansion to the gym area. It is noted that future expansion of the gym space could be included within an expansion to the court space. Further engagement with gym patrons to understand areas of high utilisation within the gym e.g., specific classes or equipment areas, would be required to support a future extension.

## 4 Recommendations

### 4.1 Priorities

After analysing feedback received through engagement and analysing trends within the Ashburton District, the following priorities have been pulled together. These priorities provide insight into future opportunities within the sport and recreation network which Council can have influence over. The priorities pulled together within this section are relevant to those on council-owned land and Council development opportunities. Where opportunities were outlined during engagement on land that was on private property, these have been listed in Section 4.2.

Table 33: Priority action list

Activity	Actions	Level of priority	Council commentary
<b>EA Networks Centre Expansion</b>	<ul style="list-style-type: none"> <li>Undertake analysis of court extension feasibility study to include additional space for current high demand sports (netball, basketball, volleyball, futsal and pickleball) and future demand sports (e.g., handball) <ul style="list-style-type: none"> <li>In parallel with this, investigate other services to add within court extension to provide for additional services e.g., TV screening of games.</li> </ul> </li> </ul>	High	
	<ul style="list-style-type: none"> <li>Upgrade two outdoor courts to include health and safety measures e.g., goal padding to provide additional court space in the short term.</li> </ul>	Low	There are health and safety measures already in place such as hoop padding. However, these are seldom used by clubs.
	<ul style="list-style-type: none"> <li>Investigate potential interim solutions for court overflow into outdoor courts e.g., Interim upgrade to outdoor courts</li> </ul>	High	
	<ul style="list-style-type: none"> <li>Investigate extension of line provision within current court space for additional space for minority sports.</li> </ul>	Medium	
<b>EA Networks Centre Hours Extension</b>	<ul style="list-style-type: none"> <li>Extending pool hours.</li> </ul>	Low	Pool hours were cut back initially due to COVID-19 restrictions. In the future additional opening hours will be subject to additional funding.
<b>Outdoor pool provision</b>	<ul style="list-style-type: none"> <li>Investigate extension of provision of learn to swim and casual swim within the Ashburton District swim network. Noting Tinwald pools requires upgrades, and the EA Network Centre is at capacity at times.</li> </ul>	Medium	Subject to decision being made on Tinwald pool development.
	<ul style="list-style-type: none"> <li>Investigate toilet provision at rural pools.</li> </ul>	Low	



<b>Rural Pool Upgrades</b>	<ul style="list-style-type: none"> <li>Investigate safety of diving structures at rural pools.</li> </ul>	Closed	Outcomes from rural pools condition assessment have been addressed.
	<ul style="list-style-type: none"> <li>Investigate upgrade of changing facilities at rural pools.</li> </ul>	In-progress	Changing facility programme in place as part of funding from government.
	<ul style="list-style-type: none"> <li>Implement recommendations within the 2021 Ashburton District Rural Pools Condition Assessment.</li> </ul>	Ongoing	Annual and ongoing subject to funding approvals.
<b>EA Networks Centre Cost</b>	<ul style="list-style-type: none"> <li>Investigate cost of court hire.</li> </ul>	Closed	For the 2023/34-year, council has instigated a fee hold to support key user groups. Fees and charges are reviewed and approved by council annually.
<b>EA Networks Centre Technology Upgrade</b>	<ul style="list-style-type: none"> <li>Move booking system onto online live system where courts can be booked and made available in real time.</li> </ul>	Low	This type of system has been previously rejected by main user groups of the EA Networks centre.
<b>Sport network database</b>	<ul style="list-style-type: none"> <li>Provide shared calendar within sports groups to outline big tournaments.</li> </ul>	Low	Sport Canterbury has been leading a piece of work in this area.
	<ul style="list-style-type: none"> <li>Investigate moving sport field bookings online.</li> </ul>	Low	Council has discussed the possibility of using the Envibe system for field bookings. This is subject to funding and approvals.
<b>Outdoor Passive Recreation Opportunities</b>	<ul style="list-style-type: none"> <li>Investigate development of additional outdoor hoops for passive recreation opportunities within the district.</li> </ul>	Low	
<b>Ashburton Domain Development</b>	<ul style="list-style-type: none"> <li>Investigate potential relocation of one sport from the Ashburton Domain. Perceived high level of conflict between current open space user groups.</li> </ul>	Medium	
	<ul style="list-style-type: none"> <li>Support the re-development of cricket wicket movement on eastern fields to allow for new domain entrance.</li> </ul>	On-hold	Domain Development Plan has a 2030's timeline on this task.
	<ul style="list-style-type: none"> <li>Clarification of ownership of assets on domain communicated to domain user groups.</li> </ul>	High	Information has been passed on by Council property team. Information to be passed on to clubs as soon as possible.
	<ul style="list-style-type: none"> <li>Indoor cricket nets require upgrading.</li> </ul>	TBC	This requires further discussion between Council and Mid Canterbury Cricket.
	<ul style="list-style-type: none"> <li>Assess opportunity for cricket ball capture within the domain oval.</li> </ul>	Club responsibility	Council previously aided mitigations at the domain oval. Any further development of

			cricket outfield would be at the cost of the user group.
	<ul style="list-style-type: none"> <li>Support development of additional carparking within the Ashburton Domain development plan.</li> </ul>	On-hold	Domain Development Plan has a 2030's timeline on this task.
	<ul style="list-style-type: none"> <li>Investigate condition of athletics pavilion to understand upgrade needs.</li> </ul>	Low	The trust that previously held this asset is winding up. This will become a Council asset to manage.
	<ul style="list-style-type: none"> <li>Sport pavilion refurbishment.</li> </ul>	Low	The trust that previously held this asset is winding up. This will become a Council asset to manage.
<b>Hockey Development</b>	<ul style="list-style-type: none"> <li>Undertake needs assessment of Hockey second turf development</li> </ul>	Medium	There have been conversations held previously with Mid-Canterbury Hockey regarding a second turf development. The domain is not fit for purpose for a second turf and so future development would need to be offsite.
<b>Cricket Development</b>	<ul style="list-style-type: none"> <li>Potential opportunity to provide more dual use facilities in Ashburton to allow for cricket expansion at Allenton Rugby Club.</li> </ul>	Club responsibility	Expansion reliant on inter-code conversations. Allenton is on private land and therefore is out of Council responsibility.
<b>Argyle Park Development</b>	<ul style="list-style-type: none"> <li>Reserve management plan to consider opportunity to create multi use-sports hub at Argyle Park for softball and football.</li> </ul>	Medium	
	<ul style="list-style-type: none"> <li>Improvements to sports fields at Argyle Park for irrigation.</li> </ul>	Medium	Would require sports code outlining issues further to council.
	<ul style="list-style-type: none"> <li>Develop additional lighting infrastructure.</li> </ul>	Club responsibility	Mid Canterbury United Football Club have ownership of the lights at Argyle Park.
	<ul style="list-style-type: none"> <li>Upgrade of current storage facility.</li> </ul>	TBC	This requires further discussion between Council and users on site.
<b>Rakaia Domain Development</b>	<ul style="list-style-type: none"> <li>Improvement of football fields.</li> </ul>	Low	Argyle Park field development more required at this stage.
<b>Rugby Field Divestment</b>	<ul style="list-style-type: none"> <li>Investigate opportunity to support relocation of rugby clubs within Ashburton township.</li> </ul>	Medium	
	<ul style="list-style-type: none"> <li>Support development of home base for Mid Canterbury Rugby within current rugby network.</li> </ul>	High	

<b>and Development</b>	<ul style="list-style-type: none"> <li>Investigate costs of club rates on private land.</li> </ul>	Medium	Clubs on private land qualify for a 50% reduction in rates charges as per the Council rates remission policy.
	<ul style="list-style-type: none"> <li>Investigate possibility for female changing room fund to provide more opportunities for female participation.</li> </ul>	Low	Council supports this development. However, the cost of these facilities falls upon the club.
	<ul style="list-style-type: none"> <li>Provide clarification to clubs around terms of lease e.g., lighting, goal posts etc.</li> </ul>	High	Information has been passed on by Council property team. Information to be passed on to clubs as soon as possible.
<b>Hampstead Rugby and All Sports Club Sewer Improvement</b>	<ul style="list-style-type: none"> <li>Improve relief sewer facility installed by Council.</li> </ul>	In-progress	Council is aware of this issue and working to remedy this situation.
<b>Robillard Park</b>	<ul style="list-style-type: none"> <li>Upgrade goal posts.</li> </ul>	Club responsibility	The Ashburton Barbarians Rugby League club have ownership over this asset. Any future upgrades would be at the club's expense.
<b>Touch Rugby Growth</b>	<ul style="list-style-type: none"> <li>Growth of the game at Methven Domain may require more field space.</li> </ul>	Low	Future issue if touch module continues to grow. Aware that there are more greenspaces not currently being utilised at Methven Domain.
	<ul style="list-style-type: none"> <li>Allocate future space provision for touch within Ashburton township if the sport was to start again at Argyle Park.</li> </ul>	Low	Multiple green space areas available within the township.
<b>Overall network</b>	<ul style="list-style-type: none"> <li>Reassessment of fees and charges of fields within greenspace network.</li> </ul>	Medium	Development of sport field space dependent on allocated budget from fees and charges.

## 4.2 Club Development – Private Land

Table 34 below outlines the proposed and in development projects within the Ashburton District for sports and recreation facilities on private land. This highlights what projects are occurring within the wider network (current or proposed future development) to understand investment in Council-owned infrastructure and potential partnership opportunities in the future.

The development listed in Table 34 is limited to the feedback that we received during consultation, there may be additional development planned on other sport and recreation facilities that is not listed here.

Table 34: Club development action list for private land

Location	Group	Development	Implementation
<b>Argyle Park</b>	Ashburton United Football Club	<ul style="list-style-type: none"> <li>Upgrading field lighting</li> </ul>	In-development
<b>Oxford Street Stadium</b>	Mid Canterbury Basketball	<ul style="list-style-type: none"> <li>Future development on site for additional courts (if new courts aren't developed at EA)</li> </ul>	Future development (unplanned)
		<ul style="list-style-type: none"> <li>General maintenance</li> </ul>	Ongoing
<b>Ashburton Domain</b>	Mid Canterbury Hockey	<ul style="list-style-type: none"> <li>Carpet replacement.</li> </ul>	Short term development (2-3years)
		<ul style="list-style-type: none"> <li>Pavilion cosmetic repairs.</li> </ul>	Short term development (2-3years)
		<ul style="list-style-type: none"> <li>Lights upgrade to LED.</li> </ul>	Mid-term development (3-5years)
<b>Hampstead Rugby and All Sports Club</b>	Hampstead Rugby and All Sports Club	<ul style="list-style-type: none"> <li>Netball court asphalt is in need of repair in some places.</li> </ul>	Short term development (2-3years)
		<ul style="list-style-type: none"> <li>Netball court lines need to be repainted.</li> </ul>	Short term development (2-3years)
		<ul style="list-style-type: none"> <li>Lighting upgrade.</li> </ul>	In-development
		<ul style="list-style-type: none"> <li>Kitchen upgrade.</li> </ul>	Future development (unplanned)
<b>Allenton Rugby Football Club</b>	Allenton Rugby Football Club	<ul style="list-style-type: none"> <li>Lighting upgrade.</li> </ul>	Short term development (2-3years)
		<ul style="list-style-type: none"> <li>Clubrooms and changing room facilities general maintenance.</li> </ul>	Ongoing
		<ul style="list-style-type: none"> <li>Septic tank upgrade.</li> </ul>	Future development (unplanned)
		<ul style="list-style-type: none"> <li>Main field upgrade.</li> </ul>	In-development
		<ul style="list-style-type: none"> <li>Interior toilets upgrade.</li> </ul>	Short term development (2-3years)
<b>Ashburton Celtic Rugby Football Club</b>	Ashburton Celtic Rugby Football Club	<ul style="list-style-type: none"> <li>Additional changing rooms currently under construction.</li> </ul>	In-development
	Ashburton Celtic squash club	<ul style="list-style-type: none"> <li>Bathrooms upgrade.</li> </ul>	Future development (unplanned)
		<ul style="list-style-type: none"> <li>Windows upgrade.</li> </ul>	Future development (unplanned)
<b>Collegiate Rugby Football Club</b>	Collegiate Rugby Football Club	<ul style="list-style-type: none"> <li>Changing rooms development (no longer fit for purpose).</li> </ul>	Future development (unplanned)
		<ul style="list-style-type: none"> <li>Clubrooms general maintenance.</li> </ul>	Ongoing
		<ul style="list-style-type: none"> <li>Clubroom roof replacement (long-term).</li> </ul>	Future development (unplanned)
<b>Methven Domain</b>	Methven Rugby Club	<ul style="list-style-type: none"> <li>Clubrooms roof upgrade.</li> </ul>	Short term development (2-3years)

		<ul style="list-style-type: none"> <li>Field upgrade.</li> </ul>	In-development
		<ul style="list-style-type: none"> <li>Changing rooms and indoor shed development.</li> </ul>	In-development (consenting phase)
<b>A&amp;P Showgrounds</b>	Mid Canterbury Rugby Union	<ul style="list-style-type: none"> <li>Facilities in need of redevelopment.</li> </ul>	Future development (unplanned)
		<ul style="list-style-type: none"> <li>Changing rooms remodel and refurbish.</li> </ul>	Future development (unplanned)
		<ul style="list-style-type: none"> <li>Lighting upgrade.</li> </ul>	Future development (unplanned)
		<ul style="list-style-type: none"> <li>Office space and meeting areas refurbish.</li> </ul>	Future development (unplanned)
		<ul style="list-style-type: none"> <li>Grandstand refurbished.</li> </ul>	Future development (unplanned)
		<ul style="list-style-type: none"> <li>Site fencing installed.</li> </ul>	Future development (unplanned)
<b>Mount Somers Domain</b>	Mount Somers Rugby Club	<ul style="list-style-type: none"> <li>Plans to extend and remodel the clubrooms.</li> </ul>	Mid-term development (3-5years)
<b>Rakaia Domain</b>	Rakaia Rugby Football Club	<ul style="list-style-type: none"> <li>New clubrooms anticipated completion by 2024 season.</li> </ul>	In-development
		<ul style="list-style-type: none"> <li>Lighting upgrade.</li> </ul>	In-development
<b>Tinwald Domain</b>	Tinwald Rugby Football Club	<ul style="list-style-type: none"> <li>Kitchen upgrade.</li> </ul>	Short term development (2-3years)
		<ul style="list-style-type: none"> <li>Lighting upgrade.</li> </ul>	Short term development (2-3years)
<b>Hinds Domain</b>	Southern Rugby	<ul style="list-style-type: none"> <li>Kitchen upgrade.</li> </ul>	Short term development (2-3years)
<b>Mayfield Domain</b>	Southern Rugby	<ul style="list-style-type: none"> <li>Changing room general maintenance.</li> </ul>	Ongoing
<b>Allenton Squash Club</b>	Allenton Squash Club	<ul style="list-style-type: none"> <li>In need of extensive repairs or demolition.</li> </ul>	Future development (unplanned)
<b>Hinds Squash club</b>	Hinds Squash club	<ul style="list-style-type: none"> <li>Changing room upgrade.</li> </ul>	Future development (unplanned)
<b>Methven Squash club</b>	Methven Squash club	<ul style="list-style-type: none"> <li>Courts repainted.</li> </ul>	Short term development (2-3years)
<b>Robillard Park</b>	Collegiate Rugby Football Club/ Collegiate South Squash Club	<ul style="list-style-type: none"> <li>Potential redevelopment of clubrooms to include rugby.</li> </ul>	Future development (unplanned)

## 4.3 Timeframes & Budget

Table 35: Timeframes and budget for priority action list

Activity	Actions	Level of priority	Estimated Timeframe (depicts delivery within the next x years)	Opex Investment (staff and/ or consultant time)	Capex Investment (structures)	Commentary
----------	---------	-------------------	--	---	-------------------------------	------------

<b>EA Networks Centre Expansion</b>	<ul style="list-style-type: none"> <li>Undertake analysis of court extension feasibility study to include additional space for current high demand sports (netball, basketball, volleyball, futsal and pickleball) and future demand sports (e.g., handball) <ul style="list-style-type: none"> <li>In parallel with this, investigate other services to add within court extension to provide for additional services e.g., TV screening of games.</li> </ul> </li> </ul>	High	1-2 years	40-60k	NIL	Cost to include concept design of court extension.
	<ul style="list-style-type: none"> <li>Upgrade two outdoor courts to include health and safety measures e.g., goal padding to provide additional court space in the short term.</li> </ul>	Low	2-3 years	NIL	5-10k	
	<ul style="list-style-type: none"> <li>Investigate potential interim solutions for court overflow into outdoor courts e.g., Interim upgrade to outdoor courts</li> </ul>	High	1-2 years	10-20k	NIL	
	<ul style="list-style-type: none"> <li>Investigate extension of line provision within current court space for additional space for minority sports.</li> </ul>	Medium	1-2 years	5-10k	5-10k	
<b>EA Networks Centre Hours Extension</b>	<ul style="list-style-type: none"> <li>Extending pool hours.</li> </ul>	Low	1-2 years	Dependant on hours chosen	NIL	
<b>Outdoor pool provision</b>	<ul style="list-style-type: none"> <li>Investigate extension of provision of learn to swim and casual swim within the Ashburton District swim network. Noting Tinwald pools requires upgrades, and the EA Network Centre is at capacity at times.</li> </ul>	Medium	2-3 years	20-30k	NIL	
<b>Rural Pool Upgrades</b>	<ul style="list-style-type: none"> <li>Investigate toilet provision at rural pools.</li> </ul>	Low	3-5 years	5-10k	NIL	
	<ul style="list-style-type: none"> <li>Investigate safety of diving structures at rural pools.</li> </ul>	Closed	Complete	Complete	Complete	Complete

	<ul style="list-style-type: none"> <li>Investigate upgrade of changing facilities at rural pools.</li> </ul>	In-progress	In-progress	In-progress	In-progress	In-progress
	<ul style="list-style-type: none"> <li>Implement recommendations within the 2021 Ashburton District Rural Pools Condition Assessment.</li> </ul>	Ongoing	5-10 years	208k	1.27m	
<b>EA Networks Centre Cost</b>	<ul style="list-style-type: none"> <li>Investigate cost of court hire.</li> </ul>	Closed	Complete	Complete	Complete	Complete
<b>EA Networks Centre Technology Upgrade</b>	<ul style="list-style-type: none"> <li>Move booking system onto online live system where courts can be booked and made available in real time.</li> </ul>	Low	1-2 years	5-10k	100k <sup>4</sup>	
<b>Sport network database</b>	<ul style="list-style-type: none"> <li>Provide shared calendar within sports groups to outline big tournaments.</li> </ul>	Low	1-2 years	5-10k	NIL	
	<ul style="list-style-type: none"> <li>Investigate moving sport field bookings online.</li> </ul>	Low	1-2 years	5-10k	NIL	
<b>Outdoor Passive Recreation Opportunities</b>	<ul style="list-style-type: none"> <li>Investigate development of additional outdoor hoops for passive recreation opportunities within the district.</li> </ul>	Low	2-3 years	5-10k	NIL	
<b>Ashburton Domain Development</b>	<ul style="list-style-type: none"> <li>Investigate potential relocation of one sport from the Ashburton Domain. Perceived high level of conflict between current open space user groups.</li> </ul>	Medium	2-3 years	20-30k	NIL	
	<ul style="list-style-type: none"> <li>Support the re-development of cricket wicket movement on eastern fields to allow for new domain entrance.</li> </ul>	On-hold	TBD	TBD	TBD	Dependent upon full adoption of the domain plan.
	<ul style="list-style-type: none"> <li>Clarification of ownership of assets on domain communicated to domain user groups.</li> </ul>	High	1-2 years	0-5k	NIL	
	<ul style="list-style-type: none"> <li>Indoor cricket nets require upgrading.</li> </ul>	TBC	TBC	TBC	TBC	Dependent upon ownership of assets.

<sup>4</sup> Based on figures taken from other Councils using similar systems

	<ul style="list-style-type: none"> <li>Assess opportunity for cricket ball capture within the domain oval.</li> </ul>	Club responsibility	NIL	NIL	NIL	Club responsibility.
	<ul style="list-style-type: none"> <li>Support development of additional carparking within the Ashburton Domain development plan.</li> </ul>	On-hold	TBD	TBD	TBD	Dependent upon full adoption of the domain plan.
	<ul style="list-style-type: none"> <li>Investigate condition of athletics pavilion to understand upgrade needs.</li> </ul>	Low	3-5 years	10-15k	NIL	
	<ul style="list-style-type: none"> <li>Sport pavilion refurbishment.</li> </ul>	Low	3-5 years	5-10k	20-30k	
<b>Hockey Development</b>	<ul style="list-style-type: none"> <li>Undertake needs assessment of Hockey second turf development</li> </ul>	Medium	2-3 years	20-40k	NIL	Cost would be at the higher end of estimate if site feasibility and concept design was included.
<b>Cricket Development</b>	<ul style="list-style-type: none"> <li>Potential opportunity to provide more dual use facilities in Ashburton to allow for cricket expansion at Allenton Rugby Club.</li> </ul>	Club responsibility	NIL	NIL	NIL	Club responsibility.
<b>Argyle Park Development</b>	<ul style="list-style-type: none"> <li>Reserve management plan to consider opportunity to create multi use-sports hub at Argyle Park for softball and football.</li> </ul>	Medium	2-3 years	40-50k	NIL	
	<ul style="list-style-type: none"> <li>Improvements to sports fields at Argyle Park for irrigation.</li> </ul>	Medium	2-3years	0-5k	180-240k	
	<ul style="list-style-type: none"> <li>Develop additional lighting infrastructure.</li> </ul>	Club responsibility	NIL	NIL	NIL	Club responsibility.
	<ul style="list-style-type: none"> <li>Upgrade of current storage facility.</li> </ul>	TBC	TBC	TBC	TBC	Dependent upon ownership of assets.
<b>Rakaia Domain Development</b>	<ul style="list-style-type: none"> <li>Improvement of football fields.</li> </ul>	Low	3-5 years	NIL	100-250k	
<b>Rugby Field Divestment</b>	<ul style="list-style-type: none"> <li>Investigate opportunity to support relocation of rugby clubs within Ashburton township.</li> </ul>	Medium	2-3 years	15-25k	NIL	



<b>and Development</b>	<ul style="list-style-type: none"> <li>Support development of home base for Mid Canterbury Rugby within current rugby network.</li> </ul>	High	1-2 years	TBC	TBC	
	<ul style="list-style-type: none"> <li>Investigate costs of club rates on private land.</li> </ul>	Medium	1-2 years	NIL	NIL	
	<ul style="list-style-type: none"> <li>Investigate possibility for female changing room fund to provide more opportunities for female participation.</li> </ul>	Low	1-2 years	NIL	NIL	
	<ul style="list-style-type: none"> <li>Provide clarification to clubs around terms of lease e.g., lighting, goal posts etc.</li> </ul>	High	1-2 years	NIL	NIL	
<b>Hampstead Rugby and All Sports Club Sewer Improvement</b>	<ul style="list-style-type: none"> <li>Improve relief sewer facility installed by Council.</li> </ul>	In-progress	1-2 years	NIL	5-10k	
<b>Robillard Park</b>	<ul style="list-style-type: none"> <li>Upgrade goal posts.</li> </ul>	Club responsibility	NIL	NIL	NIL	Club responsibility.
<b>Touch Rugby Growth</b>	<ul style="list-style-type: none"> <li>Growth of the game at Methven Domain may require more field space.</li> </ul>	Low	NIL	NIL	NIL	Not realised growth yet.
	<ul style="list-style-type: none"> <li>Allocate future space provision for touch within Ashburton township if the sport was to start again at Argyle Park.</li> </ul>	Low	2-3 years	NIL	NIL	
<b>Overall network</b>	<ul style="list-style-type: none"> <li>Reassessment of fees and charges of fields within greenspace network.</li> </ul>	Medium	1-2 years	NIL	NIL	

*Appendix A – Site Maps*

A.1 ALLENTON ALL SPORTS CLUB



A. 2 ALLENTON RUGBY FOOTBALL CLUB





A.3 ARGYLE PARK

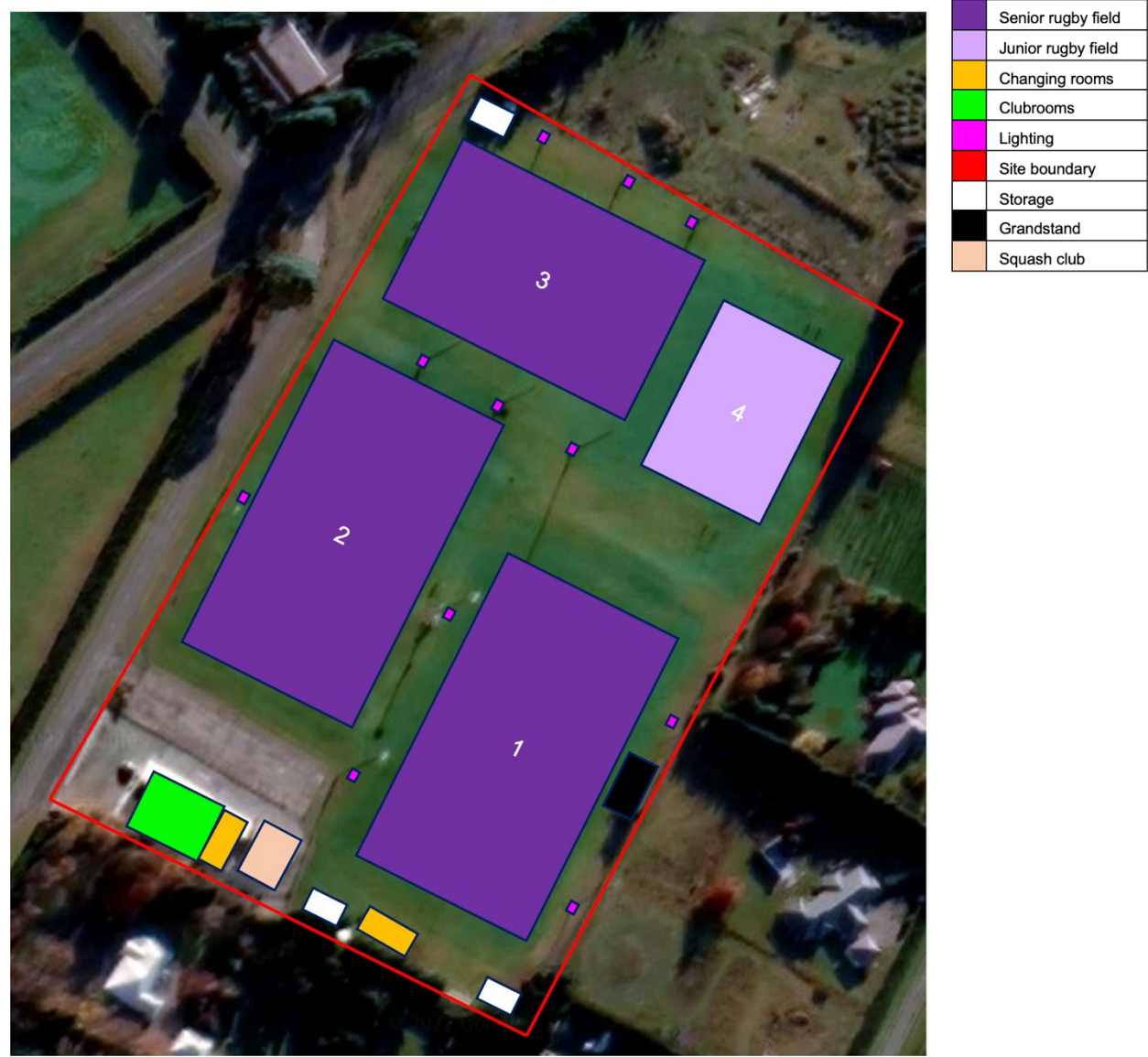


A.4 ASHBURTON A&P SHOWGROUNDS

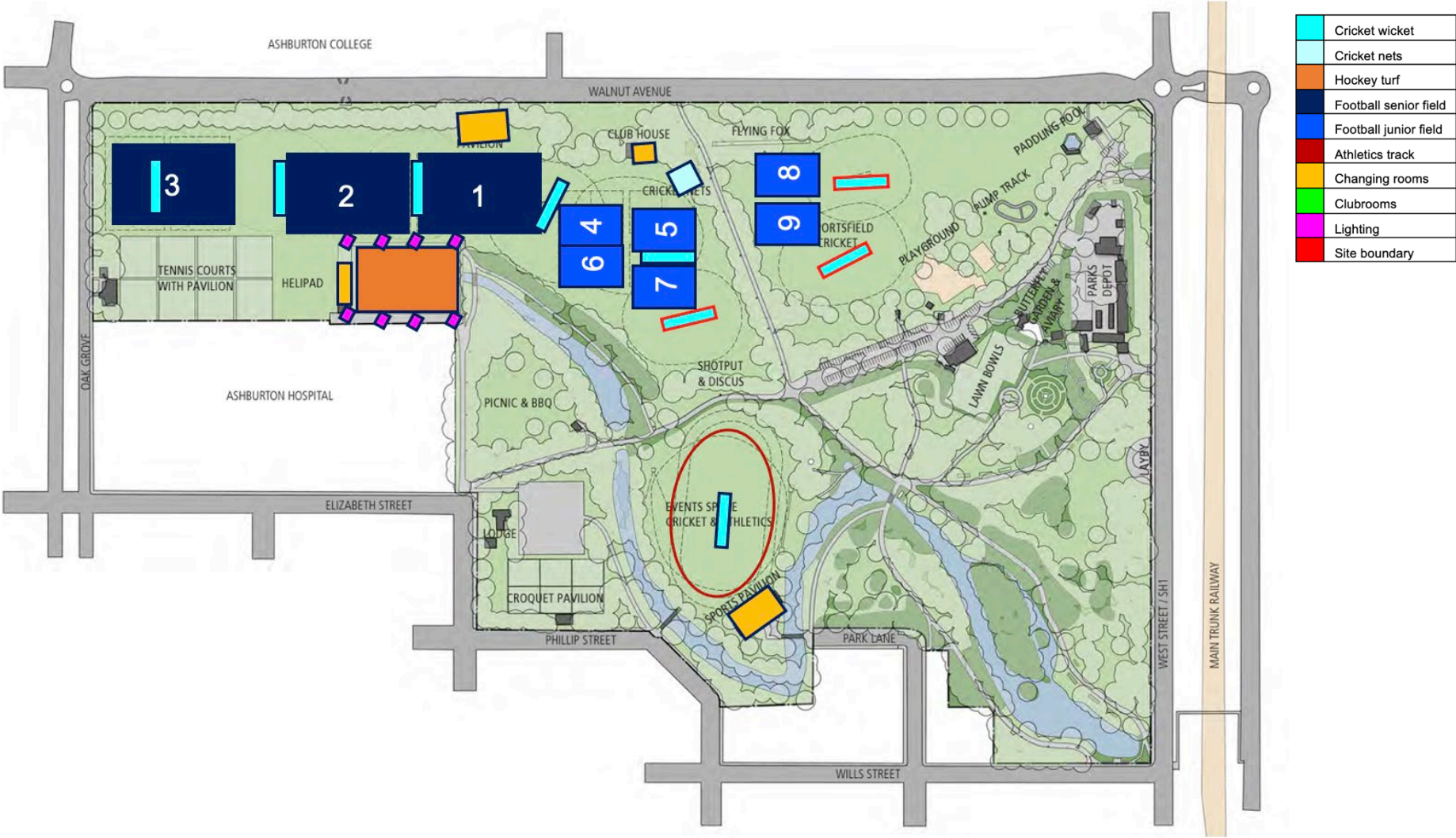




A.5 ASHBURTON CELTIC RUGBY FOOTBALL CLUB



A.6 ASHBURTON DOMAIN







### A.7 CENTENNIAL SPORTS CLUB

**Indoor single concrete court** – Concrete floor with paint not used by Mid Canterbury Basketball, only recreational use i.e., book clubs, gymnastics, children's show etc.



	Facility
	Site boundary



A.7 COLDSTREAM OVAL

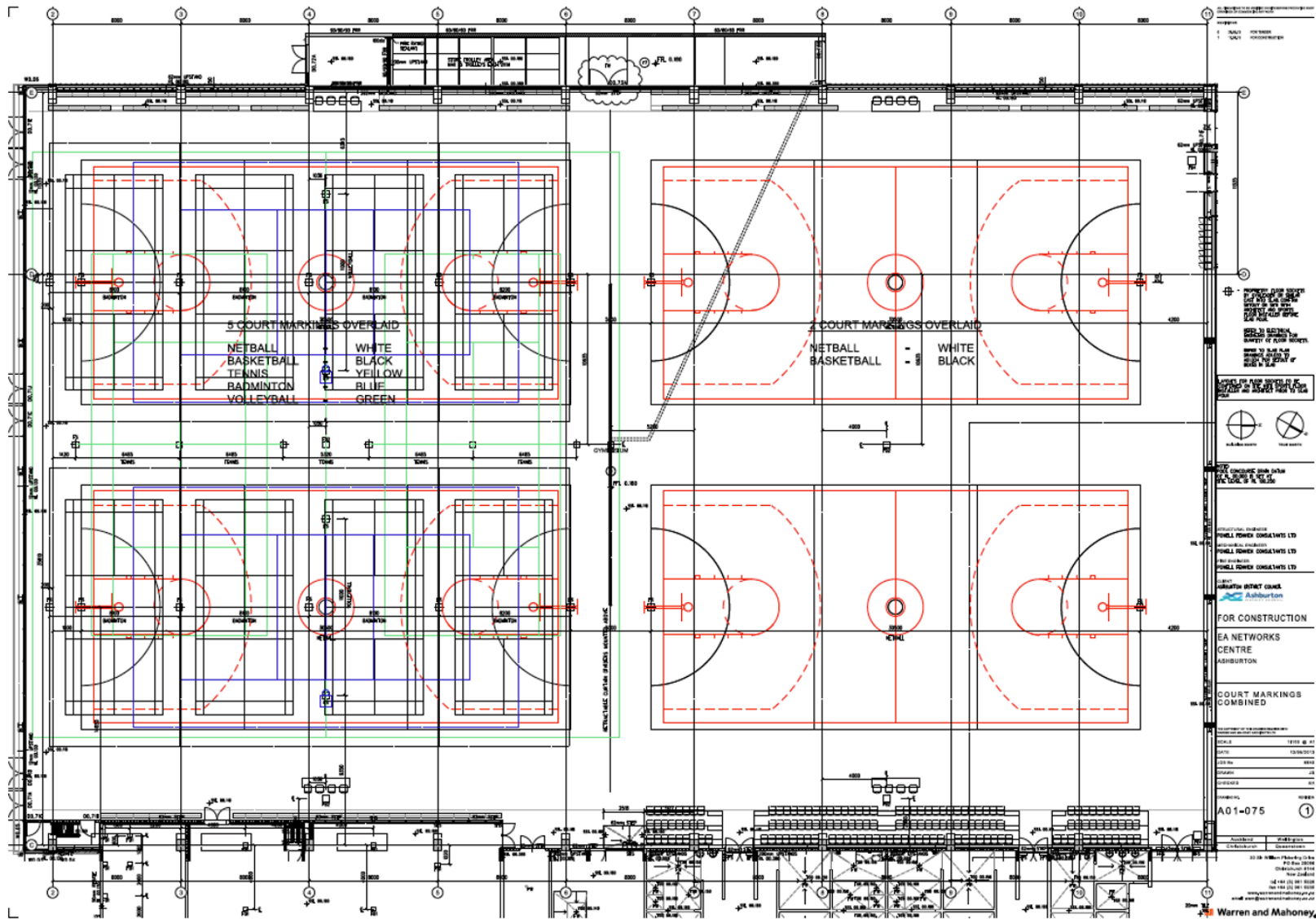


A.8 COLLEGIATE RUGBY FOOTBALL CLUB





## A.9 EA NETWORKS CENTRE





A.10 HAMPSTEAD RUGBY & ALLSPORTS CLUB



	Senior rugby field
	Junior rugby field
	Softball
	Netball courts
	Changing rooms
	Clubrooms
	Lighting
	Site boundary
	Storage



A.11 HINDS DOMAIN



A.12 HINDS SQUASH CLUB





A.13 LAURISTON OVAL



	Cricket wicket
	Cricket nets
	Clubrooms
	Site boundary



A.14 MAYFIELD DOMAIN



A.15 METHVEN DOMAIN





A.16 MOUNT SOMERS DOMAIN



### A.17 OXFORD STREET STADIUM

**Indoor single wooden basketball court** – Full sized senior indoor court owned and utilised by Mid Canterbury Basketball



	Facility
	Site boundary

A.18 RAKAIA DOMAIN





A.19 RAKAIA POOL



A.20 ROBILLIARD PARK



A.21 RUAPUNA POOL





A.22 TINWALD DOMAIN



	Senior rugby field
	Junior rugby field
	Netball courts
	Pool
	Changing rooms
	Clubrooms
	Lighting
	Site boundary
	Storage

## Appendix B – Stakeholder List

Club/Organisation	Stakeholder Name	Position	Stakeholder Contact Details
<b>In-Person Meetings and Survey</b>			
Tinwald Rugby Football Club	Skip Muir	President	<a href="mailto:themuir@snap.net.nz">themuir@snap.net.nz</a>
Mid Canterbury United Football	Carl Gourdie	Chairman	<a href="mailto:admin@mcfootball.co.nz">admin@mcfootball.co.nz</a>
Sport Canterbury	Jan Cochrane	Mid Canterbury Regional Manager	<a href="mailto:jan.cochrane@sportcanterbury.org.nz">jan.cochrane@sportcanterbury.org.nz</a>
Mid Canterbury Netball	Erin Tasker	Centre Manager	<a href="mailto:info@mcnetball.co.nz">info@mcnetball.co.nz</a>
Mid Canterbury Hockey	Chris Watson	President	<a href="mailto:chris.watson71@hotmail.com">chris.watson71@hotmail.com</a>
Mid Canterbury Cricket	Jono Pavey	Chairman	<a href="mailto:jono.pavey@ruralco.co.nz">jono.pavey@ruralco.co.nz</a>
Mid Canterbury Basketball	Mark Douglas	President	<a href="mailto:markjayne@xtra.co.nz">markjayne@xtra.co.nz</a>
Mid Canterbury Badminton	Bernie Jopson	President	<a href="mailto:berniegreg@xtra.co.nz">berniegreg@xtra.co.nz</a>
Fitness Centre Operators	Richard - Ashburton District Council	Sports Facility Manager	<a href="mailto:richard.wood@adc.govt.nz">richard.wood@adc.govt.nz</a>
AshSwim Swim School	Richard - Ashburton District Council	Sports Facility Manager	<a href="mailto:richard.wood@adc.govt.nz">richard.wood@adc.govt.nz</a>
EA Networks Pool	Richard - Ashburton District Council	Sports Facility Manager	<a href="mailto:richard.wood@adc.govt.nz">richard.wood@adc.govt.nz</a>
Southern Rugby	Garry Brown	Treasurer and Reserve Board Rugby Rep	<a href="mailto:browniebunch@gmail.com">browniebunch@gmail.com</a>
Mt Somers Rugby Football Club	Dale Stanley	President	<a href="mailto:stanley007@xtra.co.nz">stanley007@xtra.co.nz</a>
Rakaia Rugby Football Club	Warren Jones	President	<a href="mailto:joneswl70@icloud.com">joneswl70@icloud.com</a>
Methven Rugby Football Club	Karl Henderson	President	<a href="mailto:president@methvenrugby.co.nz">president@methvenrugby.co.nz</a>
Methven Football Club	Rowan Smithers	President	<a href="mailto:methvenfcnz@gmail.com">methvenfcnz@gmail.com</a>
Mid Canterbury Softball Association	Carl O'Neill	President	<a href="mailto:midcanterburysoftball@gmail.com">midcanterburysoftball@gmail.com</a>
Ashburton A&P Association	Victor Schikker	President	<a href="mailto:vschikker@pggwrightson.co.nz">vschikker@pggwrightson.co.nz</a>
Mid Canterbury Rugby Union	Tanya Dearn	CEO	<a href="mailto:ceo@midcanterburyrugby.co.nz">ceo@midcanterburyrugby.co.nz</a>
Hampstead Rugby & All sports club	Jim Henderson	President All Sports Club	<a href="mailto:jim.henderson@adc.govt.nz">jim.henderson@adc.govt.nz</a>
Allenton Rugby Football Club	Luke McGuinness	President Allenton RFC	<a href="mailto:luke@engsolutions.co.nz">luke@engsolutions.co.nz</a>
Ashburton Celtic RFC	Darion Grey	President Celtic RFC	<a href="mailto:admin@ashburtonceltic.co.nz">admin@ashburtonceltic.co.nz</a>
Collegiate RFC	Richard McArthur	President Collegiate RFC	<a href="mailto:rb.mcarthur@yahoo.com">rb.mcarthur@yahoo.com</a>
<b>Survey Only</b>			
Tinwald Pool Committee	Richard - Ashburton District Council	Sports Facility Manager	<a href="mailto:richard.wood@adc.govt.nz">richard.wood@adc.govt.nz</a>
Ashburton Volleyball Club	Dave		<a href="mailto:leanndave@windowslive.com">leanndave@windowslive.com</a>
Ashburton Warriors Club	Aline		<a href="mailto:Kitch_uplb@yahoo.com">Kitch_uplb@yahoo.com</a>
Ashburton Pickleball	David Bishop	President	<a href="mailto:dkbishop@slingshot.co.nz">dkbishop@slingshot.co.nz</a> <a href="mailto:ruben@pnza.org.nz">ruben@pnza.org.nz</a>

Ashburton College Netball	Karen Burrowes	President	<a href="mailto:karen_burrowes@bnz.co.nz">karen_burrowes@bnz.co.nz</a>
Celtic Netball Club	Kimble Watson	Secretary	<a href="mailto:kimblewatson@hotmail.com">kimblewatson@hotmail.com</a>
Hampstead Netball Club	Janene McDowell		<a href="mailto:nene1bade1@gmail.com">nene1bade1@gmail.com</a>
Southern Netball Club	Elise Brown	President	<a href="mailto:e_brown14@hotmail.com">e_brown14@hotmail.com</a>
United Netball Club	Kimberley Grayling	President	<a href="mailto:kimberleygrayling@hotmail.co.nz">kimberleygrayling@hotmail.co.nz</a>
Mayfield Pool Committee	Tim Rowe	Manager	<a href="mailto:tim.rowe@fireandemergency.nz">tim.rowe@fireandemergency.nz</a>
Mayfield District Squash Racquets Club			<a href="mailto:mayfieldsquash@outlook.com">mayfieldsquash@outlook.com</a>
Hinds Pool Committee	Sarah Wakelin	Chair	<a href="mailto:wakelin.sa@gmail.com">wakelin.sa@gmail.com</a>
Hinds Squash Club			<a href="mailto:hindssquash@gmail.com">hindssquash@gmail.com</a>
Mt Somers Pool Committee	Kate Oliver	Manager	<a href="mailto:bertkate8081@gmail.com">bertkate8081@gmail.com</a>
Rakaia Squash Club			<a href="mailto:rakaiasquash@gmail.com">rakaiasquash@gmail.com</a>
Rakaia Football Club			<a href="mailto:rakaiaunitedfootballclub@gmail.com">rakaiaunitedfootballclub@gmail.com</a>
Rakaia Pool Committee	Helena Dunlea	Manager	<a href="mailto:thedunleaclan@gmail.com">thedunleaclan@gmail.com</a>
Methven Touch Rugby	Andrea McMurray	Club Contact/ Secretary	<a href="mailto:andymcplus3@gmail.com">andymcplus3@gmail.com</a>
Methven Squash Club			<a href="mailto:methvensquash@gmail.com">methvensquash@gmail.com</a>
Ashburton Athletics Club			<a href="mailto:ashburtonathleticsclub@gmail.com">ashburtonathleticsclub@gmail.com</a>
Ashburton Celtic Squash			<a href="mailto:kirstyc@pb.co.nz">kirstyc@pb.co.nz</a>
Ashburton Squash Club			<a href="mailto:ashburtonsquashclub@hotmail.com">ashburtonsquashclub@hotmail.com</a>
Centennial Sports Club	Ken Baker	President	<a href="mailto:kenbaker@xtra.co.nz">kenbaker@xtra.co.nz</a>
Collegiate South Squash Club			<a href="mailto:colsqu@gmail.com">colsqu@gmail.com</a>
Ashburton Barbarians Rugby League	Kate Moses	Secretary	<a href="mailto:kate.moses@jennian.co.nz">kate.moses@jennian.co.nz</a>
<b>Phone Call Only</b>			
Tinwald Reserve Board	Leen Braam	Board Chair	<a href="mailto:leen@braam.co.nz">leen@braam.co.nz</a>
Mayfield Reserve Board	Barry Austin	Board Chair	<a href="mailto:danebury@xtra.co.nz">danebury@xtra.co.nz</a>
Ruapuna Pool Committee	Rebecca Whillans	Ruapuna Reserve Board Chair	<a href="mailto:becwhillans@gmail.com">becwhillans@gmail.com</a>
Hinds Reserve Board	Alison King	Board Chair	<a href="mailto:alisonrt10@hotmail.com">alisonrt10@hotmail.com</a>
Mt Somers Reserve Board	Kristin Stace	Board Chair	<a href="mailto:kristin.stace@gmail.com">kristin.stace@gmail.com</a>
Rakaia Board	Bruce Perry	Board Chair	<a href="mailto:rakaiareserveboard@gmail.com">rakaiareserveboard@gmail.com</a>
Methven Reserve Board	Colin Moore		

## Appendix C – Expected Participation Rates for Ashburton District<sup>5</sup>

### Expected Participation Rates for Ashburton District All SA2s

Click on an Activity below to filter map

Rank	Sport	
1	Walking for sport or leisure	51.8%
2	Jogging/running	24.3%
3	Gardening	22.8%
4	Inactive	22.8%
5	Playing games	20.4%
6	Individual workout	18.8%
7	Cycling / biking	15.7%
8	Swimming	14.2%
9	Group exercise class	9.4%
10	Playing	7.6%
11	Mountain biking	7.2%
12	Dance	7.1%
13	Playing on playground	6.8%
14	Pilates/yoga at gym/class/else..	6.3%
15	Scotering	4.5%
16	Trampolining	4.4%
17	Tramping	4.2%
18	Basketball	3.2%
19	Other	3.1%
20	Golf	3.0%
21	Netball (outdoor)	3.0%
22	Touch rugby	2.7%
23	Tennis	2.1%
24	Cricket (outdoors)	2.0%
25	Rugby	2.0%
26	Gymnastics	1.9%
27	Fishing	1.9%
28	Football (soccer outdoor)	1.8%
29	Hockey (outdoor)	1.6%
30	Martial Arts	1.6%
31	Snow Sports	1.4%
32	Table tennis	1.4%

33	Surfing / body boarding	1.4%
34	Badminton	1.3%
35	Athletics (track and field)	1.3%
36	Horse riding / Equestrian	1.2%
37	Canoeing / kayaking	1.2%
38	Volleyball	1.1%
39	Motorsports	0.9%
40	Squash	0.9%
41	Boxing	0.9%
42	Skateboarding	0.8%
43	Bowls (indoor)	0.8%
44	Shooting (rifle and pistol)	0.7%
45	Exercising at home	0.6%
46	Handball	0.5%
47	Tai chi	0.5%
48	Rock climbing / bouldering	0.5%
49	Hunting	0.5%
50	Bowls (outdoor/lawn)	0.4%
51	Rowing	0.4%
52	Softball	0.4%
53	Croquet	0.4%
54	Weightlifting	0.4%
55	Rugby league	0.3%
56	Sailing / yachting	0.3%
57	Ultimate frisbee	0.3%
58	Multisport / Triathlon / Duathlo..	0.3%
59	Parkour	0.3%
60	Rollerblading	0.2%
61	Interacting with dog	0.2%
62	Surf life saving	0.2%
63	Orienteering / rogaining	0.2%
64	Water skiing	0.2%
65	Ki-o-rahi	0.2%
66	Aquarobics (aqua/water joggin..	0.1%
67	Water polo	0.1%
68	Waka ama	0.1%
69	Stand up paddle (boarding)	0.1%

<sup>5</sup> Data pulled from Sport New Zealand Insights Tool: <https://sportnz.org.nz/resources/insights-tool/>



70	Cheerleading	0.1%
71	PE at school	0.1%
72	Going to the gym	0.1%
73	Petanque	0.1%
74	Diving / scuba diving	0.0%
75	Adventure Racing	0.0%
76	Archery	0.0%
77	Roller skating	0.0%
	Mountaineering / mountain cli..	0.0%
	Coaching/umpiring	0.0%
		0.0% 10.0% 20.0% 30.0% 40.0% 50.0% 60.0%
		% Active